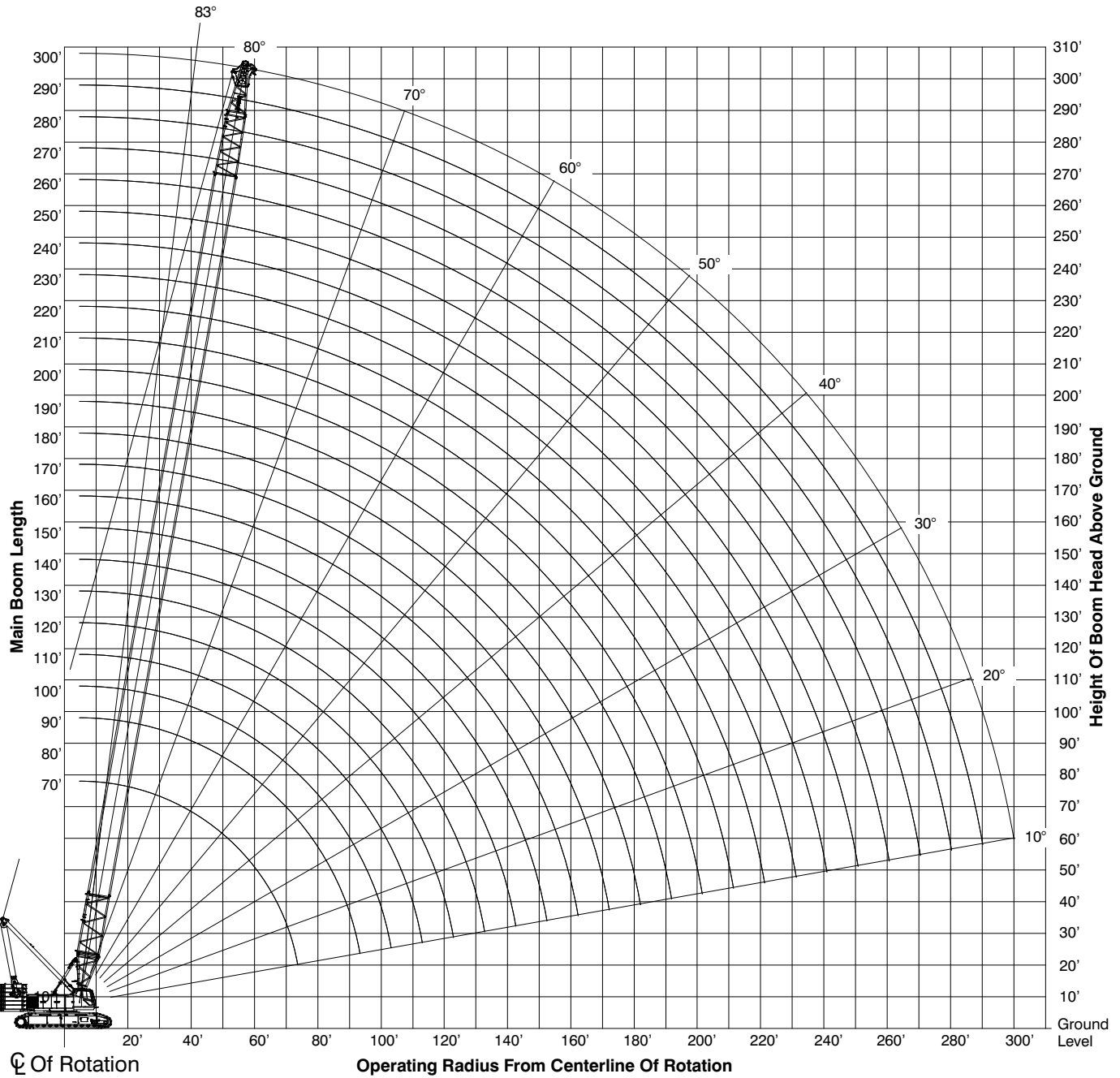


Working Range Diagram – Extended Gauge



Notes:

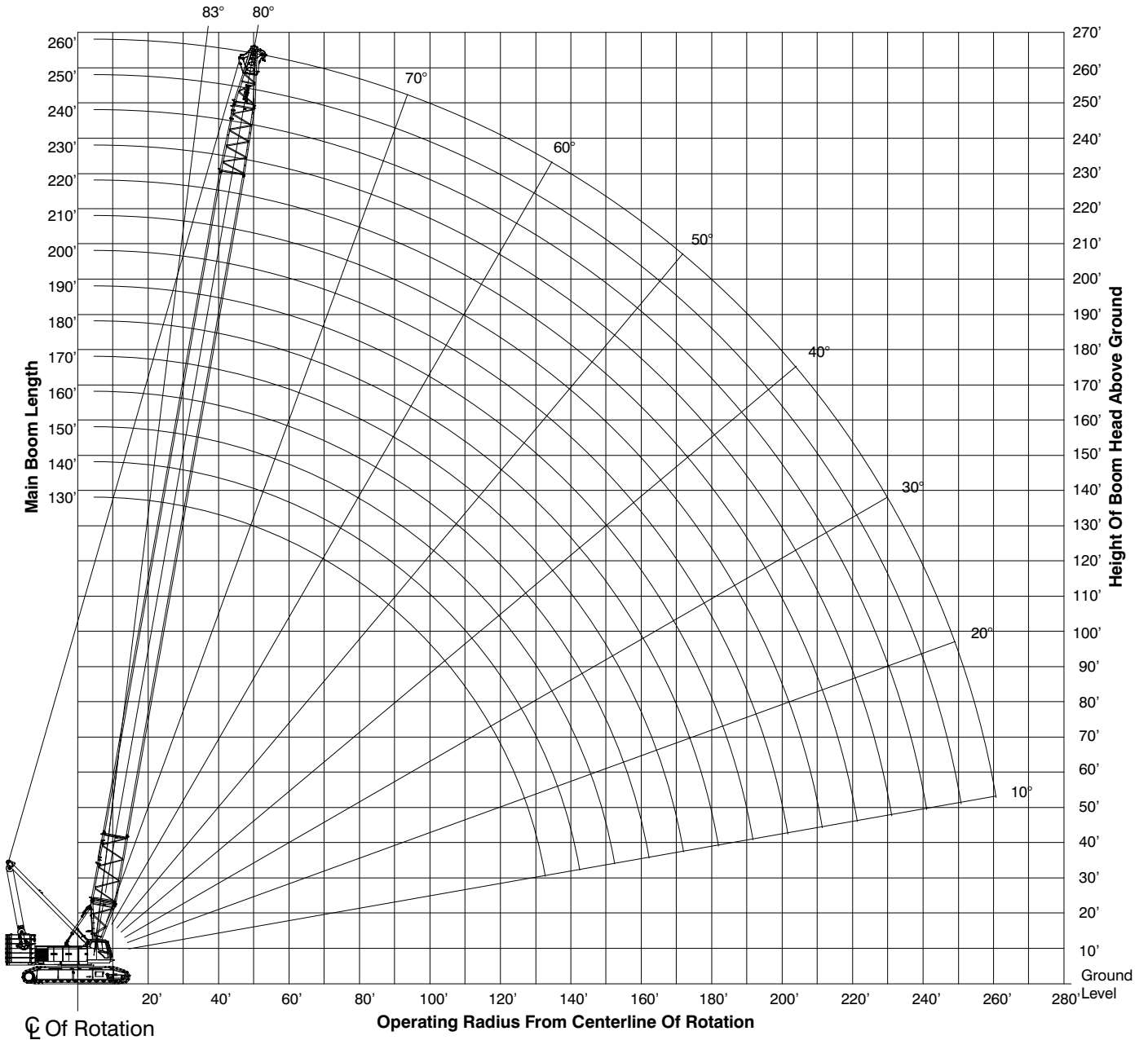
1. Boom geometry shown is for unloaded condition and crane standing level on firm supporting surface. Boom deflection, subsequent radius, and boom angle change must be accounted for when applying load to hook.

Load Chart – Extended Gauge

Heavy Duty Boom With Heavy Duty Top – Extended Gauge (22') – 360° Rotation ABC + A [221,300 + 75,000 lb (100.3 + 34.0mt)] Cwt [All capacities are listed in kips (mt)]														
Load Radius ft (m)	Boom Length ft (m)													Load Radius ft (m)
	70 (21.34)	90 (27.43)	110 (33.53)	130 (39.62)	150 (45.72)	170 (51.82)	190 (57.91)	210 (64.01)	230 (70.10)	250 (76.20)	270 (82.30)	290 (88.39)	300 (91.44)	
16 (4.88)	600.0 (272.7)													16 (4.88)
17 (5.18)	569.0 (258.6)													17 (5.18)
18 (5.49)	539.8 (245.4)													18 (5.49)
19 (5.79)	513.5 (233.4)	510.1 (231.9)												19 (5.79)
20 (6.10)	489.4 (222.5)	486.4 (221.1)												20 (6.10)
30 (9.14)	331.2 (150.5)	329.8 (149.9)	327.8 (149.0)	325.5 (148.0)	322.9 (146.8)	308.7 (140.3)								30 (9.14)
40 (12.19)	235.1 (106.9)	235.6 (107.1)	235.5 (107.0)	235.2 (106.9)	234.8 (106.7)	234.4 (106.5)	233.9 (106.3)	225.3 (102.4)	186.9 (85.0)	153.4 (69.7)	128.5 (58.4)			40 (12.19)
50 (15.24)	170.9 (77.7)	171.2 (77.8)	171.0 (77.7)	170.6 (77.5)	170.0 (77.3)	169.4 (77.0)	168.7 (76.7)	168.0 (76.4)	167.2 (76.0)	151.5 (68.9)	126.9 (57.7)	105.3 (47.9)	97.5 (44.3)	50 (15.24)
60 (18.29)	132.9 (60.4)	133.3 (60.6)	133.0 (60.5)	132.4 (60.2)	131.8 (59.9)	131.0 (59.5)	130.2 (59.2)	129.4 (58.8)	128.6 (58.5)	127.8 (58.1)	118.2 (53.7)	100.0 (45.5)	92.6 (42.1)	60 (18.29)
70 (21.34)	107.5 (48.9)	108.1 (49.1)	107.8 (49.0)	107.2 (48.7)	106.5 (48.4)	105.7 (48.0)	104.9 (47.7)	104.0 (47.3)	103.1 (46.9)	102.1 (46.4)	101.2 (46.0)	92.5 (42.0)	84.5 (38.4)	70 (21.34)
80 (24.38)		90.1 (41.0)	89.9 (40.9)	89.4 (40.6)	88.6 (40.3)	87.8 (39.9)	86.9 (39.5)	85.9 (39.0)	85.0 (38.6)	83.9 (38.1)	82.9 (37.7)	82.0 (37.3)	75.5 (34.3)	80 (24.38)
90 (27.43)		76.5 (34.8)	76.5 (34.8)	76.0 (34.5)	75.2 (34.2)	74.3 (33.8)	73.4 (33.4)	72.4 (32.9)	71.5 (32.5)	70.3 (32.0)	69.3 (31.5)	68.3 (31.0)	67.8 (30.8)	90 (27.43)
100 (30.48)			66.0 (30.0)	65.6 (29.8)	64.8 (29.5)	63.9 (29.0)	63.0 (28.6)	62.0 (28.2)	61.0 (27.7)	59.8 (27.2)	58.7 (26.7)	57.7 (26.2)	57.2 (26.0)	100 (30.48)
110 (33.53)			57.5 (26.1)	57.2 (26.0)	56.5 (25.7)	55.6 (25.3)	54.7 (24.9)	53.7 (24.4)	52.6 (23.9)	51.3 (23.3)	50.3 (22.9)	49.3 (22.4)	48.7 (22.1)	110 (33.53)
120 (36.58)				50.3 (22.9)	49.7 (22.6)	48.8 (22.2)	47.9 (21.8)	46.8 (21.3)	45.8 (20.8)	44.5 (20.2)	43.4 (19.7)	42.4 (19.3)	41.8 (19.0)	120 (36.58)
130 (39.62)				44.5 (20.2)	44.0 (20.0)	43.1 (19.6)	42.2 (19.2)	41.2 (18.7)	40.1 (18.2)	38.8 (17.6)	37.7 (17.1)	36.6 (16.6)	36.1 (16.4)	130 (39.62)
140 (42.67)					39.1 (17.8)	38.3 (17.4)	37.4 (17.0)	36.4 (16.5)	35.3 (16.0)	33.9 (15.4)	32.8 (14.9)	31.8 (14.5)	31.2 (14.2)	140 (42.67)
150 (45.72)					34.8 (15.8)	34.1 (15.5)	33.2 (15.1)	32.2 (14.6)	31.2 (14.2)	29.8 (13.5)	28.7 (13.0)	27.6 (12.5)	27.0 (12.3)	150 (45.72)
160 (48.77)						30.5 (13.9)	29.6 (13.5)	28.6 (13.0)	27.6 (12.5)	26.2 (11.9)	25.1 (11.4)	24.0 (10.9)	23.4 (10.6)	160 (48.77)
170 (51.82)						27.2 (12.4)	26.5 (12.0)	25.5 (11.6)	24.4 (11.1)	23.0 (10.5)	21.9 (10.0)	20.8 (9.5)	20.3 (9.2)	170 (51.82)
180 (54.86)							23.6 (10.7)	22.7 (10.3)	21.7 (9.9)	20.2 (9.2)	19.1 (8.7)	18.0 (8.2)	17.5 (8.0)	180 (54.86)
190 (57.91)							21.0 (9.5)	20.2 (9.2)	19.2 (8.7)	17.7 (8.0)	16.7 (7.6)	15.6 (7.1)	15.0 (6.8)	190 (57.91)
200 (60.96)								17.9 (8.1)	16.9 (7.7)	15.5 (7.0)	14.4 (6.5)	13.3 (6.0)	12.8 (5.8)	200 (60.96)
220 (67.06)									13.0 (5.9)	11.6 (5.3)	10.6 (4.8)	9.5 (4.3)	8.9 (4.0)	220 (67.06)
240 (73.15)										8.4 (3.8)	7.4 (3.4)	6.3 (2.9)	5.8 (2.6)	240 (73.15)
260 (79.25)											4.6 (2.1)	3.6 (1.6)	3.1 (1.4)	260 (79.25)
270 (82.30)											4.6 (2.1)	3.6 (1.6)		270 (82.30)

This material is supplied for reference use only. Operator must refer to in-cab Crane Rating Manual and Operator's Manual to determine allowable crane lifting capacities and assembly and operating procedures.

Working Range Diagram – Retracted Gauge



Notes:

1. Boom geometry shown is for unloaded condition and crane standing level on firm supporting surface. Boom deflection, subsequent radius, and boom angle change must be accounted for when applying load to hook.

Load Chart – Retracted Gauge

Heavy Duty Boom With Heavy Duty Top – Retracted Gauge (19' 2") – 360° Rotation																
[All capacities are listed in kips (mt)]																
Load Radius ft (m)	Boom Length ft (m)													Load Radius ft (m)		
	AB + A [172,800 + 75,000 lb (78.3 + 34.0mt)] Ctwrt						ABC + A [221,300 + 75,000 lb (100.3 + 34.0mt)] Ctwrt									
	70 (21.34)	90 (27.43)	110 (33.53)	130 (39.62)	150 (45.72)	170 (51.82)	190 (57.91)	210 (64.01)	230 (70.10)	250 (76.20)	270 (82.30)	290 (88.39)	300 (91.44)			
16 (4.88)	561.7 (255.3)													16 (4.88)		
17 (5.18)	531.4 (241.5)													17 (5.18)		
18 (5.49)	504.1 (229.1)													18 (5.49)		
19 (5.79)	479.4 (217.9)	476.4 (216.5)												19 (5.79)		
20 (6.10)	456.9 (207.7)	454.2 (206.5)												20 (6.10)		
30 (9.14)	268.7 (122.1)	269.3 (122.4)	269.5 (122.5)	269.4 (122.5)	269.3 (122.4)	308.7 (140.3)								30 (9.14)		
40 (12.19)	175.3 (79.7)	175.6 (79.8)	175.4 (79.7)	175.1 (79.6)	174.6 (79.4)	205.6 (93.5)	205.0 (93.2)	204.4 (92.9)	186.9 (85.0)	153.4 (69.7)	128.5 (58.4)			40 (12.19)		
50 (15.24)	128.3 (58.3)	128.5 (58.4)	128.2 (58.3)	127.7 (58.0)	127.0 (57.7)	150.0 (68.2)	149.3 (67.9)	148.5 (67.5)	147.7 (67.1)	147.1 (66.9)	126.9 (57.7)	105.3 (47.9)	97.5 (44.3)	50 (15.24)		
60 (18.29)	99.8 (45.4)	100.1 (45.5)	99.8 (45.4)	99.2 (45.1)	98.4 (44.7)	116.6 (53.0)	115.8 (52.6)	114.9 (52.2)	114.0 (51.8)	113.2 (51.5)	112.3 (51.0)	100.0 (45.5)	92.6 (42.1)	60 (18.29)		
70 (21.34)	80.5 (36.6)	81.1 (36.9)	80.7 (36.7)	80.1 (36.4)	79.3 (36.0)	94.3 (42.9)	93.4 (42.5)	92.5 (42.0)	91.5 (41.6)	90.5 (41.1)	89.6 (40.7)	88.6 (40.3)	84.5 (38.4)	70 (21.34)		
80 (24.38)		67.3 (30.6)	67.1 (30.5)	66.4 (30.2)	65.7 (29.9)	78.3 (35.6)	77.4 (35.2)	76.4 (34.7)	75.4 (34.3)	74.3 (33.8)	73.3 (33.3)	72.3 (32.9)	71.8 (32.6)	80 (24.38)		
90 (27.43)		56.7 (25.8)	56.7 (25.8)	56.2 (25.5)	55.4 (25.2)	66.3 (30.1)	65.4 (29.7)	64.4 (29.3)	63.4 (28.8)	62.2 (28.3)	61.1 (27.8)	60.1 (27.3)	59.6 (27.1)	90 (27.43)		
100 (30.48)			48.6 (22.1)	48.1 (21.9)	47.3 (21.5)	57.0 (25.9)	56.0 (25.5)	55.0 (25.0)	54.0 (24.5)	52.7 (24.0)	51.6 (23.5)	50.6 (23.0)	50.1 (22.8)	100 (30.48)		
110 (33.53)			41.9 (19.0)	41.6 (18.9)	40.9 (18.6)	49.5 (22.5)	48.5 (22.0)	47.5 (21.6)	46.4 (21.1)	45.1 (20.5)	44.0 (20.0)	43.0 (19.5)	42.4 (19.3)	110 (33.53)		
120 (36.58)				36.2 (16.5)	35.6 (16.2)	43.3 (19.7)	42.3 (19.2)	41.3 (18.8)	40.2 (18.3)	38.9 (17.7)	37.8 (17.2)	36.7 (16.7)	36.2 (16.5)	120 (36.58)		
130 (39.62)				31.6 (14.4)	31.1 (14.1)	38.2 (17.4)	37.2 (16.9)	36.2 (16.5)	35.1 (16.0)	33.7 (15.3)	32.6 (14.8)	31.5 (14.3)	31.0 (14.1)	130 (39.62)		
140 (42.67)					27.2 (12.4)	33.8 (15.4)	32.8 (14.9)	31.8 (14.5)	30.7 (14.0)	29.3 (13.3)	28.2 (12.8)	27.1 (12.3)	26.5 (12.0)	140 (42.67)		
150 (45.72)					23.8 (10.8)	30.0 (13.6)	29.0 (13.2)	28.0 (12.7)	26.9 (12.2)	25.5 (11.6)	24.4 (11.1)	23.3 (10.6)	22.7 (10.3)	150 (45.72)		
160 (48.77)						26.6 (12.1)	25.8 (11.7)	24.7 (11.2)	23.7 (10.8)	22.2 (10.1)	21.1 (9.6)	20.0 (9.1)	19.5 (8.9)	160 (48.77)		
170 (51.82)							23.6 (10.7)	22.8 (10.4)	21.9 (10.0)	20.8 (9.5)	19.4 (8.8)	18.3 (8.3)	17.1 (7.8)	16.6 (7.5)	170 (51.82)	
180 (54.86)								20.2 (9.2)	19.3 (8.8)	18.3 (8.3)	16.8 (7.6)	15.7 (7.1)	14.6 (6.6)	14.0 (6.4)	180 (54.86)	
190 (57.91)									17.8 (8.1)	17.0 (7.7)	16.0 (7.3)	14.5 (6.6)	13.4 (6.1)	11.7 (5.3)	190 (57.91)	
200 (60.96)										14.9 (6.8)	13.9 (6.3)	12.5 (5.7)	11.4 (5.2)	10.3 (4.4)	200 (60.96)	
220 (67.06)											10.4 (4.7)	8.9 (4.0)	7.9 (3.6)	6.8 (2.8)	220 (67.06)	
240 (73.15)												5.9 (2.7)	4.9 (2.2)	3.8 (1.5)	240 (73.15)	
250 (76.20)													4.5 (2.0)	3.6 (1.6)	2.5 (0.9)	250 (76.20)
260 (79.25)														2.4 (1.1)		260 (79.25)

This material is supplied for reference use only. Operator must refer to in-cab Crane Rating Manual and Operator's Manual to determine allowable crane lifting capacities and assembly and operating procedures.

Long Range Boom

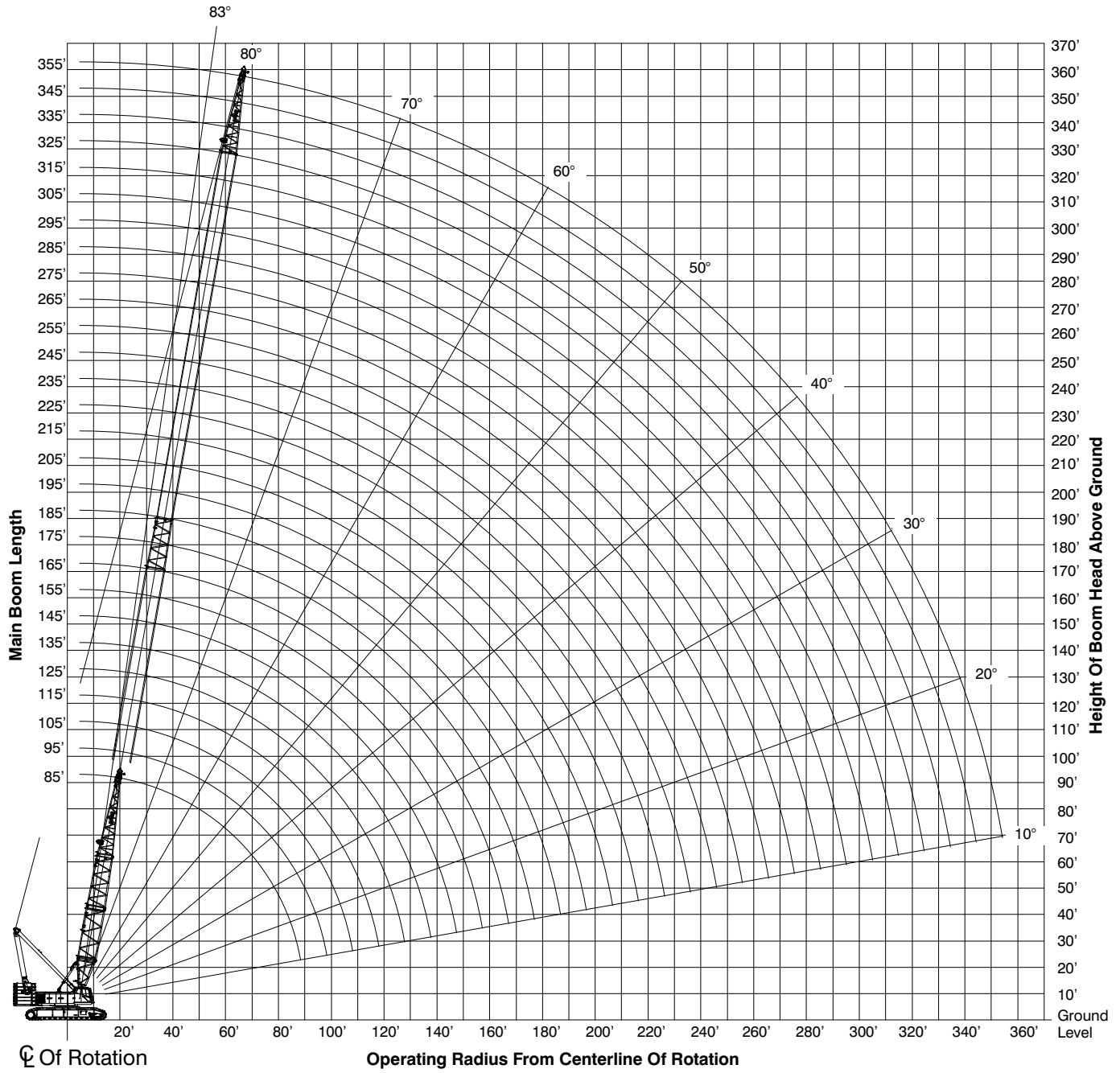
Boom Make-Up

Boom Length ft (m)	Boom Extensions — ft (m)										
	15 (4.57) "N" Base	20 (6.10) "JT" Base Ext	20 (6.10) "JC" Ext	30 (9.14) "JC" Ext	40 (12.19) "JC" Ext	20 (6.10) "JR" Tapered	10 (3.05) "FE" Ext	20 (6.10) "FE" Ext	30 (9.14) "FE" Ext	40 (12.19) "FE" Ext	30 (9.14) "G" Top
85 (25.91)	1	1				1					1
95 (28.96)	Not Recommended										
105 (32.00)	1	1	1			1					1
115 (35.05)	1	1		1		1					1
125 (38.10)	1	1			1	1					1
135 (41.15)	1	1	1	1		1					1
145 (44.20)	1	1	1		1	1					1
155 (47.24)	1	1		1	1	1					1
165 (50.29)	1	1			2	1					1
175 (53.34)	1	1	1	1	1	1					1
185 (56.39)	1	1	1		2	1					1
195 (59.44)	1	1		1	2	1					1
205 (62.48)	Not Recommended										
215 (65.53)	1	1	1	1	2	1					1
225 (68.58)	1	1	1	1	2	1	1				1
235 (71.63)	1	1	1	1	2	1		1			1
245 (74.68)	1	1	1	1	2	1			1		1
255 (77.72)	1	1	1	1	2	1				1	1
265 (80.77)	1	1	1	1	2	1	1			1	1
275 (83.82)	1	1	1	1	2	1		1		1	1
285 (86.87)	1	1	1	1	2	1			1	1	1
295 (89.92)	1	1	1	1	2	1				2	1
305 (92.96)	1	1	1	1	2	1	1			2	1
315 (96.01)	1	1	1	1	2	1		1		2	1
325 (99.06)	1	1	1	1	2	1			1	2	1
335 (102.11)	1	1	1	1	2	1	1		1	2	1
345 (105.16)	1	1	1	1	2	1		1	1	2	1
355 (108.20)	1	1	1	1	2	1	1	1	1	2	1

Notes:

- Capacities shown are in kips/metric tons (1 kip = 1,000 lb / 1 metric ton = 0.45 kips) and are not more than 75% of the tipping loads with the crane standing level on firm supporting surface. A deduction must be made from these capacities for weight of hook block, hook ball, sling, grapple, load weighing device, etc. When using main hook while jib or tip extension is attached, reduce capacities by values shown in Crane Rating Manual. See Operator's Manual for all limitations when raising or lowering attachment.
- The capacities in the shaded areas are based on structural strength. The capacities in the non-shaded areas are based on stability ratings.
- For recommended reeving, parts of line, wire rope type, and wire rope inspection, see Wire Rope Capacity Chart, Operator's Manual, and Parts Manual.
- Load ratings are based on freely suspended loads and make no allowances for such factors as the effect of the wind, ground conditions, and operating speeds. The operator shall therefore reduce load ratings in order to take these conditions into account. Refer to the Crane Rating Manual for Wind Speed Restrictions.
- The 30 ft (9.14m) live mast must be used for all capacities listed.
- The least stable rated condition is over the side.
- Booms must be erected and lowered over the end for maximum stability.
- Main boom length must not exceed 355 ft (108.20m).
- Do not operate at radii and boom lengths where the Crane Rating Manual lists no capacity. Do not use longer booms or jibs than those listed in the Crane Rating Manual. Any of the above can cause a tipping condition, or boom and jib failure.
- These capacities are in compliance with ASME/ANSI B30.5 at date of manufacture.
- These capacities apply only to the crane as originally manufactured and normally equipped by Link-Belt Construction Equipment Company.

Working Range Diagram – Extended Gauge



Notes:

1. Boom geometry shown is for unloaded condition and crane standing level on firm supporting surface. Boom deflection, subsequent radius, and boom angle change must be accounted for when applying load to hook.

Load Chart – Extended Gauge

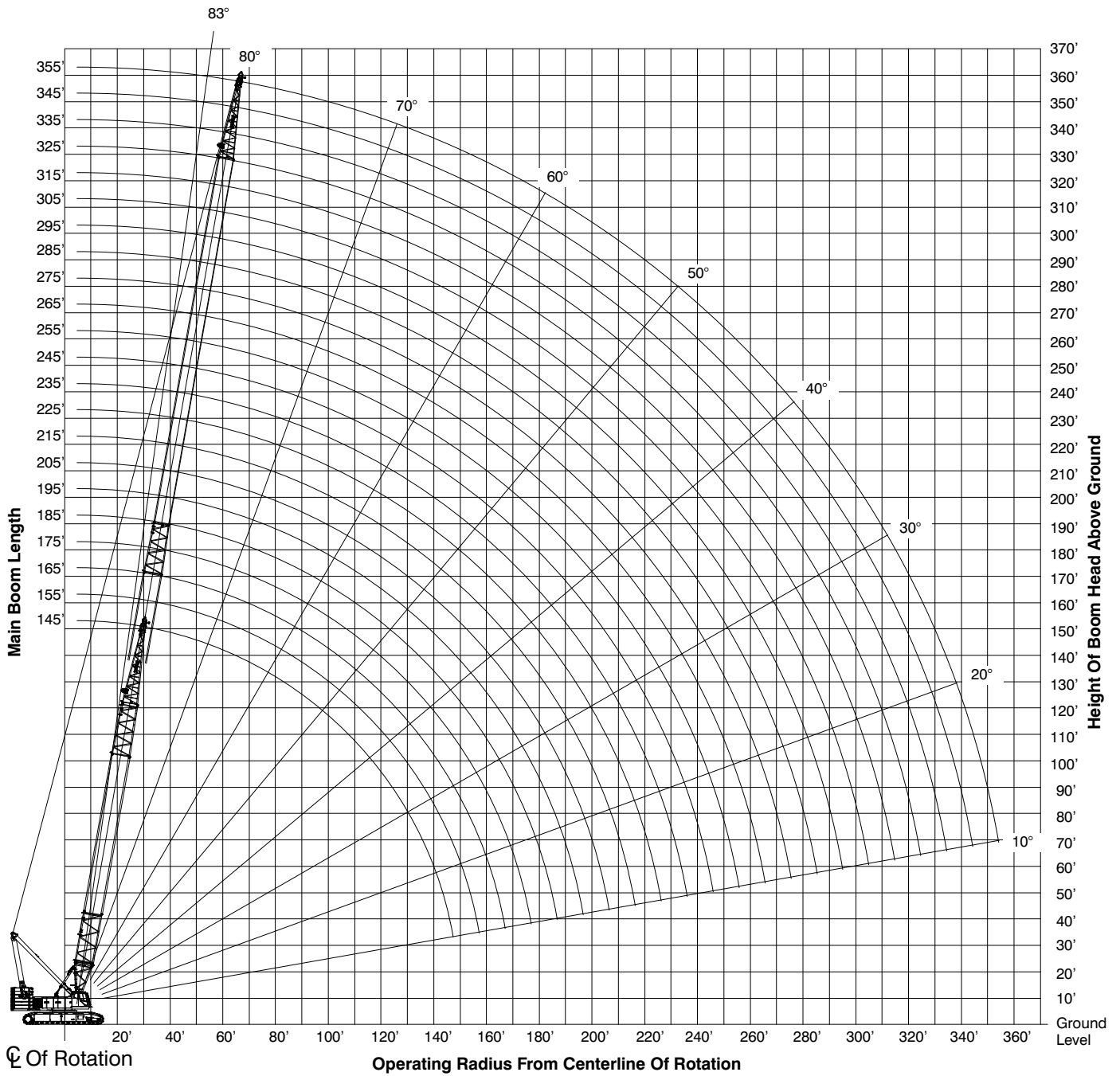
Long Range Top – Extended Gauge (22') – 360° Rotation ABC + A [221,300 + 75,000 lb (100.3 + 34.0mt)] Cwt [All capacities are listed in kips (mt)]																
Load Radius ft (m)	Boom Length ft (m)															Load Radius ft (m)
	85 (25.91)	105 (32.00)	125 (38.10)	145 (44.20)	165 (50.29)	185 (56.39)	205 (62.48)	225 (68.58)	245 (74.68)	265 (80.77)	285 (86.87)	305 (92.96)	325 (99.06)	345 (105.2)	355 (108.2)	
17 (5.18)	302.2 (137.4)															17 (5.18)
18 (5.49)	296.5 (134.8)															18 (5.49)
19 (5.79)	290.9 (132.2)															19 (5.79)
20 (6.10)	282.7 (128.5)	272.5 (123.9)														20 (6.10)
25 (7.62)	259.8 (118.1)	248.6 (113.0)	237.0 (107.7)	229.9 (104.5)												25 (7.62)
30 (9.14)	237.8 (108.1)	226.9 (103.1)	217.7 (99.0)	209.8 (95.4)	200.2 (91.0)											30 (9.14)
35 (10.67)	221.5 (100.7)	209.9 (95.4)	198.0 (90.0)	190.8 (86.7)	183.9 (83.6)	177.2 (80.5)	170.6 (77.5)									35 (10.67)
40 (12.19)	207.6 (94.4)	192.8 (87.6)	184.4 (83.8)	177.1 (80.5)	170.1 (77.3)	163.9 (74.5)	155.1 (70.5)	138.8 (63.1)	129.6 (58.9)							40 (12.19)
50 (15.24)	175.1 (79.6)	169.3 (77.0)	157.9 (71.8)	151.0 (68.6)	145.1 (66.0)	139.3 (63.3)	134.2 (61.0)	117.5 (53.4)	113.4 (51.5)	115.6 (52.5)	89.1 (40.5)	80.7 (36.7)				50 (15.24)
60 (18.29)	137.3 (62.4)	137.2 (62.4)	136.7 (62.1)	133.1 (60.5)	127.4 (57.9)	119.7 (54.4)	114.9 (52.2)	102.8 (46.7)	102.4 (46.5)	109.1 (49.6)	84.4 (38.4)	76.4 (34.7)	61.9 (28.1)	52.5 (23.9)	47.4 (21.5)	60 (18.29)
70 (21.34)	112.2 (51.0)	112.2 (51.0)	111.7 (50.8)	111.0 (50.5)	110.2 (50.1)	105.5 (48.0)	100.6 (45.7)	90.3 (41.0)	91.9 (41.8)	99.2 (45.1)	76.0 (34.5)	70.7 (32.1)	57.9 (26.3)	49.4 (22.5)	44.7 (20.3)	70 (21.34)
80 (24.38)	94.4 (42.9)	94.4 (42.9)	93.9 (42.7)	93.2 (42.4)	92.4 (42.0)	91.5 (41.6)	88.6 (40.3)	76.8 (34.9)	78.6 (35.7)	89.5 (40.7)	71.0 (32.3)	64.7 (29.4)	53.7 (24.4)	45.7 (20.8)	37.9 (17.2)	80 (24.38)
90 (27.43)		81.1 (36.9)	80.6 (36.6)	79.9 (36.3)	79.1 (36.0)	78.2 (35.5)	76.2 (34.6)	67.9 (30.9)	70.3 (32.0)	76.0 (34.5)	66.3 (30.1)	59.1 (26.9)	50.1 (22.8)	42.4 (19.3)	35.1 (16.0)	90 (27.43)
100 (30.48)		70.6 (32.1)	70.3 (32.0)	69.6 (31.6)	68.7 (31.2)	67.8 (30.8)	66.8 (30.4)	60.2 (27.4)	63.0 (28.6)	65.6 (29.8)	62.4 (28.4)	53.7 (24.4)	46.6 (21.2)	36.5 (16.6)	32.8 (14.9)	100 (30.48)
110 (33.53)			62.0 (28.2)	61.3 (27.9)	60.5 (27.5)	59.5 (27.0)	58.5 (26.6)	53.8 (24.5)	56.5 (25.7)	57.2 (26.0)	56.9 (25.9)	49.0 (22.3)	43.7 (19.9)	34.1 (15.5)	30.6 (13.9)	110 (33.53)
120 (36.58)			55.1 (25.0)	54.5 (24.8)	53.7 (24.4)	52.8 (24.0)	51.8 (23.5)	48.1 (21.9)	50.7 (23.0)	50.4 (22.9)	50.1 (22.8)	44.5 (20.2)	38.2 (17.4)	32.0 (14.5)	28.5 (13.0)	120 (36.58)
130 (39.62)				48.9 (22.2)	48.1 (21.9)	47.2 (21.5)	46.1 (21.0)	41.4 (18.8)	45.0 (20.5)	44.7 (20.3)	44.4 (20.2)	37.6 (17.1)	36.0 (16.4)	29.8 (13.5)	26.5 (12.0)	130 (39.62)
140 (42.67)				44.0 (20.0)	43.3 (19.7)	42.4 (19.3)	41.4 (18.8)	35.8 (16.3)	40.2 (18.3)	39.9 (18.1)	39.6 (18.0)	34.4 (15.6)	34.1 (15.5)	27.7 (12.6)	24.7 (11.2)	140 (42.67)
150 (45.72)					39.2 (17.8)	38.3 (17.4)	37.3 (17.0)	31.1 (14.1)	34.1 (15.5)	35.8 (16.3)	35.5 (16.1)	31.4 (14.3)	31.6 (14.4)	26.0 (11.8)	23.1 (10.5)	150 (45.72)

This material is supplied for reference use only. Operator must refer to in-cab Crane Rating Manual and Operator's Manual to determine allowable crane lifting capacities and assembly and operating procedures.

(Continued) Long Range Top — Extended Gauge (22') — 360° Rotation ABC + A [221,300 + 75,000 lb (100.3 + 34.0mt)] Cwt [All capacities are listed in kips (mt)]																
Load Radius ft (m)	Boom Length ft (m)															Load Radius ft (m)
	85 (25.91)	105 (32.00)	125 (38.10)	145 (44.20)	165 (50.29)	185 (56.39)	205 (62.48)	225 (68.58)	245 (74.68)	265 (80.77)	285 (86.87)	305 (92.96)	325 (99.06)	345 (105.2)	355 (108.2)	
160 (48.77)					35.5 (16.1)	34.7 (15.8)	33.7 (15.3)	27.2 (12.4)	30.7 (14.0)	32.2 (14.6)	31.9 (14.5)	28.6 (13.0)	29.1 (13.2)	24.2 (11.0)	21.5 (9.8)	160 (48.77)
170 (51.82)						31.6 (14.4)	30.6 (13.9)	24.0 (10.9)	27.4 (12.5)	29.1 (13.2)	28.8 (13.1)	26.1 (11.9)	26.8 (12.2)	22.7 (10.3)	20.1 (9.1)	170 (51.82)
180 (54.86)						28.7 (13.0)	27.8 (12.6)	21.1 (9.6)	24.3 (11.0)	26.4 (12.0)	26.0 (11.8)	23.7 (10.8)	24.7 (11.2)	21.1 (9.6)	18.8 (8.5)	180 (54.86)
190 (57.91)							25.1 (11.4)	19.3 (8.8)	21.4 (9.7)	23.9 (10.9)	23.6 (10.7)	21.6 (9.8)	22.6 (10.3)	19.5 (8.9)	17.6 (8.0)	190 (57.91)
200 (60.96)							22.6 (10.3)	18.0 (8.2)	18.8 (8.5)	21.7 (9.9)	21.4 (9.7)	19.7 (9.0)	20.5 (9.3)	17.8 (8.1)	16.5 (7.5)	200 (60.96)
210 (64.01)								15.8 (7.2)	16.3 (7.4)	19.7 (9.0)	19.4 (8.8)	17.7 (8.0)	18.5 (8.4)	16.3 (7.4)	15.5 (7.0)	210 (64.01)
220 (67.06)								13.4 (6.1)	13.8 (6.3)	17.9 (8.1)	17.6 (8.0)	15.8 (7.2)	16.7 (7.6)	14.8 (6.7)	14.2 (6.5)	220 (67.06)
230 (70.10)									11.2 (5.1)	16.3 (7.4)	15.9 (7.2)	14.1 (6.4)	15.1 (6.9)	13.4 (6.1)	13.0 (5.9)	230 (70.10)
240 (73.15)									8.6 (3.9)	14.2 (6.5)	14.4 (6.5)	12.5 (5.7)	13.6 (6.2)	12.3 (5.6)	11.8 (5.4)	240 (73.15)
250 (76.20)										11.8 (5.4)	13.0 (5.9)	10.9 (5.0)	12.2 (5.5)	11.0 (5.0)	10.6 (4.8)	250 (76.20)
260 (79.25)										9.1 (4.1)	11.8 (5.4)	9.3 (4.2)	10.9 (5.0)	9.9 (4.5)	9.2 (4.2)	260 (79.25)
270 (82.30)											10.5 (4.8)	7.7 (3.5)	9.8 (4.5)	8.8 (4.0)	7.9 (3.6)	270 (82.30)
280 (85.34)											9.4 (4.3)	6.2 (2.8)	8.7 (4.0)	7.7 (3.5)	6.6 (3.0)	280 (85.34)
290 (88.39)												4.6 (2.1)	7.6 (3.5)	6.7 (3.0)	5.4 (2.5)	290 (88.39)
300 (91.44)												2.9 (1.3)	6.6 (3.0)	5.7 (2.6)	4.1 (1.9)	300 (91.44)
310 (94.49)													5.3 (2.4)	4.7 (2.1)	3.0 (1.4)	310 (94.49)
320 (97.54)													3.7 (1.7)	3.8 (1.7)		320 (97.54)
330 (100.6)														2.7 (1.2)		330 (100.6)

This material is supplied for reference use only. Operator must refer to in-cab Crane Rating Manual and Operator's Manual to determine allowable crane lifting capacities and assembly and operating procedures.

Working Range Diagram – Retracted Gauge



Notes:

1. Boom geometry shown is for unloaded condition and crane standing level on firm supporting surface. Boom deflection, subsequent radius, and boom angle change must be accounted for when applying load to hook.

Load Chart – Retracted Gauge

Long Range Top – Retracted Gauge (19' 2") – 360° Rotation ABC + A [221,300 + 75,000 lb (100.3 + 34.0mt)] Cwt [All capacities are listed in kips (mt)]																
Load Radius ft (m)	Boom Length ft (m)															Load Radius ft (m)
	AB + A [172,150 + 75,000 lb (78.1 + 34.0mt)] Cwt						ABC + A [221,700 + 75,000 lb (100.3 + 34.0mt)] Cwt									
	85 (25.91)	105 (32.00)	125 (38.10)	145 (44.20)	165 (50.29)	185 (56.39)	205 (62.48)	225 (68.58)	245 (74.68)	265 (80.77)	285 (86.87)	305 (92.96)	325 (99.06)	345 (105.2)	355 (108.2)	
17 (5.18)	302.2 (137.4)															17 (5.18)
18 (5.49)	296.5 (134.8)															18 (5.49)
19 (5.79)	290.9 (132.2)															19 (5.79)
20 (6.10)	282.7 (128.5)	272.5 (123.9)														20 (6.10)
25 (7.62)	259.8 (118.1)	248.6 (113.0)	237.0 (107.7)	229.9 (104.5)												25 (7.62)
30 (9.14)	237.8 (108.1)	226.9 (103.1)	217.7 (99.0)	209.8 (95.4)	200.2 (91.0)											30 (9.14)
35 (10.67)	216.4 (98.4)	209.9 (95.4)	198.0 (90.0)	190.8 (86.7)	183.9 (83.6)	177.2 (80.5)	170.6 (77.5)									35 (10.67)
40 (12.19)	179.1 (81.4)	179.1 (81.4)	178.7 (81.2)	177.1 (80.5)	170.1 (77.3)	163.9 (74.5)	155.1 (70.5)	138.8 (63.1)	129.6 (58.9)							40 (12.19)
50 (15.24)	132.3 (60.1)	132.2 (60.1)	131.7 (59.9)	131.1 (59.6)	130.4 (59.3)	129.6 (58.9)	134.2 (61.0)	117.5 (53.4)	113.4 (51.5)	115.6 (52.5)	89.1 (40.5)	67.2 (30.5)				50 (15.24)
60 (18.29)	104.1 (47.3)	104.0 (47.3)	103.5 (47.0)	102.8 (46.7)	102.0 (46.4)	101.1 (46.0)	114.9 (52.2)	102.8 (46.7)	102.4 (46.5)	109.1 (49.6)	84.4 (38.4)	63.2 (28.7)	50.7 (23.0)	52.5 (23.9)	47.4 (21.5)	60 (18.29)
70 (21.34)	85.2 (38.7)	85.1 (38.7)	84.6 (38.5)	83.8 (38.1)	83.0 (37.7)	82.1 (37.3)	97.0 (44.1)	90.3 (41.0)	91.9 (41.8)	96.0 (43.6)	76.0 (34.5)	59.3 (27.0)	47.2 (21.5)	49.4 (22.5)	44.7 (20.3)	70 (21.34)
80 (24.38)	71.5 (32.5)	71.5 (32.5)	71.0 (32.3)	70.3 (32.0)	69.4 (31.5)	68.5 (31.1)	81.1 (36.9)	76.8 (34.9)	78.6 (35.7)	79.9 (36.3)	71.0 (32.3)	55.0 (25.0)	43.5 (19.8)	45.7 (20.8)	37.9 (17.2)	80 (24.38)
90 (27.43)		61.3 (27.9)	60.8 (27.6)	60.1 (27.3)	59.2 (26.9)	58.2 (26.5)	69.1 (31.4)	67.9 (30.9)	68.1 (31.0)	67.9 (30.9)	66.3 (30.1)	51.2 (23.3)	36.7 (16.7)	42.4 (19.3)	35.1 (16.0)	90 (27.43)
100 (30.48)		53.2 (24.2)	52.8 (24.0)	52.1 (23.7)	51.2 (23.3)	50.3 (22.9)	59.8 (27.2)	58.9 (26.8)	58.8 (26.7)	58.5 (26.6)	58.2 (26.5)	47.7 (21.7)	34.3 (15.6)	36.5 (16.6)	32.8 (14.9)	100 (30.48)
110 (33.53)			46.4 (21.1)	45.7 (20.8)	44.8 (20.4)	43.9 (20.0)	52.4 (23.8)	51.4 (23.4)	51.2 (23.3)	51.0 (23.2)	50.6 (23.0)	44.7 (20.3)	32.2 (14.6)	34.1 (15.5)	30.6 (13.9)	110 (33.53)
120 (36.58)			41.0 (18.6)	40.4 (18.4)	39.6 (18.0)	38.6 (17.5)	46.3 (21.0)	45.3 (20.6)	45.1 (20.5)	44.8 (20.4)	44.5 (20.2)	39.1 (17.8)	30.4 (13.8)	32.0 (14.5)	28.5 (13.0)	120 (36.58)
130 (39.62)				36.0 (16.4)	35.2 (16.0)	34.2 (15.5)	41.1 (18.7)	40.2 (18.3)	40.0 (18.2)	39.7 (18.0)	39.3 (17.9)	37.0 (16.8)	28.6 (13.0)	29.8 (13.5)	26.5 (12.0)	130 (39.62)
140 (42.67)				32.2 (14.6)	31.4 (14.3)	30.5 (13.9)	36.8 (16.7)	35.8 (16.3)	35.6 (16.2)	35.3 (16.0)	34.9 (15.9)	34.5 (15.7)	26.9 (12.2)	27.7 (12.6)	24.7 (11.2)	140 (42.67)
150 (45.72)					28.2 (12.8)	27.3 (12.4)	33.1 (15.0)	31.1 (14.1)	31.9 (14.5)	31.6 (14.4)	31.2 (14.2)	30.8 (14.0)	25.4 (11.5)	26.0 (11.8)	23.1 (10.5)	150 (45.72)

This material is supplied for reference use only. Operator must refer to in-cab Crane Rating Manual and Operator's Manual to determine allowable crane lifting capacities and assembly and operating procedures.

(Continued) Long Range Top — Retracted Gauge (19' 2") — 360° Rotation ABC + A [221,300 + 75,000 lb (100.3 + 34.0mt)] Cwt [All capacities are listed in kips (mt)]																	
Load Radius ft (m)	Boom Length ft (m)															Load Radius ft (m)	
	AB + A [172,150 + 75,000 lb (78.1 + 34.0mt)] Cwt						ABC + A [221,700 + 75,000 lb (100.3 + 34.0mt)] Cwt										
	85 (25.91)	105 (32.00)	125 (38.10)	145 (44.20)	165 (50.29)	185 (56.39)	205 (62.48)	225 (68.58)	245 (74.68)	265 (80.77)	285 (86.87)	305 (92.96)	325 (99.06)	345 (105.2)	355 (108.2)		
160 (48.77)					25.3 (11.5)	24.5 (11.1)	29.8 (13.5)	27.2 (12.4)	28.6 (13.0)	28.3 (12.9)	27.9 (12.7)	27.5 (12.5)	24.1 (11.0)	24.2 (11.0)	21.5 (9.8)	160 (48.77)	
170 (51.82)						22.0 (10.0)	27.0 (12.3)	24.0 (10.9)	25.8 (11.7)	25.5 (11.6)	25.1 (11.4)	24.7 (11.2)	23.0 (10.5)	22.7 (10.3)	20.1 (9.1)	170 (51.82)	
180 (54.86)						19.8 (9.0)	24.5 (11.1)	21.1 (9.6)	23.2 (10.5)	22.9 (10.4)	22.6 (10.3)	22.2 (10.1)	21.7 (9.9)	20.7 (9.4)	18.8 (8.5)	180 (54.86)	
190 (57.91)							22.2 (10.1)	19.3 (8.8)	21.0 (9.5)	20.7 (9.4)	20.3 (9.2)	19.9 (9.0)	19.4 (8.8)	18.5 (8.4)	17.6 (8.0)	190 (57.91)	
200 (60.96)							20.1 (9.1)	18.0 (8.2)	18.8 (8.5)	18.7 (8.5)	18.3 (8.3)	17.9 (8.1)	17.4 (7.9)	16.5 (7.5)	16.2 (7.4)	200 (60.96)	
210 (64.01)								15.8 (7.2)	16.3 (7.4)	16.9 (7.7)	16.5 (7.5)	16.1 (7.3)	15.6 (7.1)	14.6 (6.6)	14.4 (6.5)	210 (64.01)	
220 (67.06)								13.4 (6.1)	13.8 (6.3)	15.2 (6.9)	14.9 (6.8)	14.4 (6.5)	14.0 (6.4)	13.0 (5.9)	12.7 (5.8)	220 (67.06)	
230 (70.10)									11.2 (5.1)	13.7 (6.2)	13.3 (6.0)	12.9 (5.9)	12.5 (5.7)	11.5 (5.2)	11.2 (5.1)	230 (70.10)	
240 (73.15)									8.6 (3.9)	12.3 (5.6)	12.0 (5.5)	11.6 (5.3)	11.1 (5.0)	10.1 (4.6)	9.9 (4.5)	240 (73.15)	
250 (76.20)										11.0 (5.0)	10.7 (4.9)	10.3 (4.7)	9.8 (4.5)	8.9 (4.0)	8.6 (3.9)	250 (76.20)	
260 (79.25)										9.1 (4.1)	9.5 (4.3)	9.1 (4.1)	8.7 (4.0)	7.7 (3.5)	7.4 (3.4)	260 (79.25)	
270 (82.30)											8.4 (3.8)	8.0 (3.6)	7.6 (3.5)	6.6 (3.0)	6.4 (2.9)	270 (82.30)	
280 (85.34)											7.3 (3.3)	7.0 (3.2)	6.6 (3.0)	5.6 (2.5)	5.4 (2.5)	280 (85.34)	
290 (88.39)												6.0 (2.7)	5.6 (2.5)	4.7 (2.1)	4.4 (2.0)	290 (88.39)	
300 (91.44)													5.1 (2.3)	4.7 (2.1)	3.6 (1.6)	300 (91.44)	
310 (94.49)														3.9 (1.8)	3.0 (1.4)	2.7 (1.2)	310 (94.49)
320 (97.54)															3.1 (1.4)	2.2 (1.0)	320 (97.54)

This material is supplied for reference use only. Operator must refer to in-cab Crane Rating Manual and Operator's Manual to determine allowable crane lifting capacities and assembly and operating procedures.