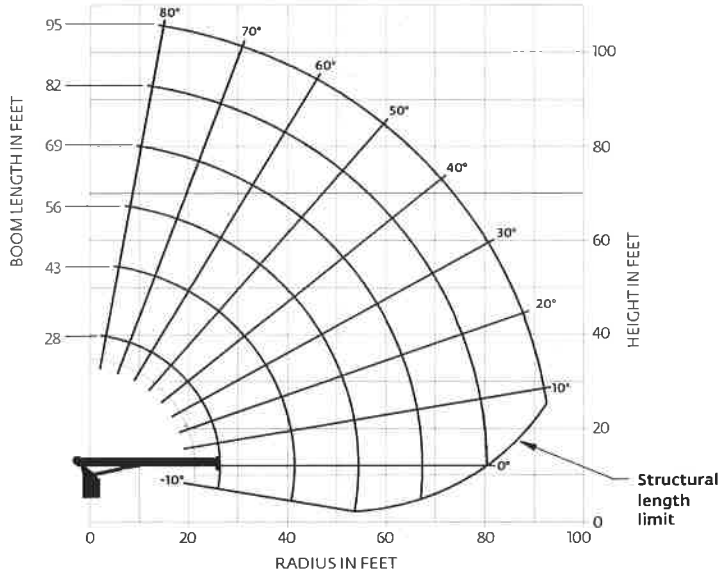


Capacities

Series 1195: 95 ft boom

Other Series 1100 Load Rating Charts are available. National Crane will send you a chart on request – or you may secure needed load rating information through your nearest National Crane dealer.



CAUTION:

- Do not operate crane booms, jib extensions, any accessories or loads within 3 m (10 ft) of live power lines or other conductors of electricity.
- Jib and boom capacities shown are maximum for each section.
- Do not exceed capacities at reduced radii.
- Load ratings shown on the load rating charts are maximum allowable loads with the outriggers properly extended on a firm, level surface and the crane leveled and mounted on a factory recommended truck.
- Always level the crane with the level indicator located on the crane.
- The operator must reduce load to allow for factors such as wind, ground conditions, operating speeds and their effects on freely suspended loads.
- Overloading this crane may cause structural collapse or instability.
- Weights on any accessories attached to the boom or loadline must be deducted from the load chart capacities.
- Do not exceed jib capabilities at any reduced boom lengths.
- Do not deadhead lineblock against boom tip when extending boom or winching up.
- Keep at least three wraps of loadline on drum at all times.
- Use only specified cable with this machine.

Load chart

LOAD RADIUS (ft)	LOADED BOOM ANGLE	28 ft BOOM (lb)	LOADED BOOM ANGLE	43 ft BOOM (lb)	LOADED BOOM ANGLE	56 ft BOOM (lb)	LOADED BOOM ANGLE	69 ft BOOM (lb)	LOADED BOOM ANGLE	82 ft BOOM (lb)	LOADED BOOM ANGLE	95 ft BOOM (lb)
5	78.5	53,900										
8	71.5	40,300										
10	67	33,700	76	30,500								
12	62.5	28,900	73.5	26,200	78	24,000						
14	57.5	25,400	70.5	23,000	76	21,000	79	19,000				
16	52	22,400	67.5	20,400	73.5	18,700	77.5	17,000	80	14,500		
20	40	17,700	61.5	16,700	69	15,300	74	13,900	77	12,500	79	10,200
25	17.5	11,800	53	13,500	63.5	12,400	69.5	11,400	73.5	10,500	76	9000
30			43.5	11,000	57.5	10,400	65	9600	69.5	8900	73	8000
35			32	8800	50.5	8800	60	8200	66	7500	70	7000
40			15.5	6200	44	7500	55	7100	62	6600	66.5	6100
45					35.5	6100	50	5950	58	5650	63	5300
50					24.5	4900	43.5	4950	53.5	4750	59.5	4600
55							37	4100	48.5	4000	56	4000
60							28.5	3350	43.5	3400	52	3400
65							16.5	2600	37.5	2800	47.5	2850
70									31	2300	43	2350
75									22.5	1900	38	1950
80											32.5	1550
85											26	1250
90											16.5	950
	0	6200	0	2900	0	1450	0	650				

*Note: 56,000 lb (28 USc) load requires optional 9/16 in 6x25 IWRC cable. Shaded areas are structurally limited capacities.

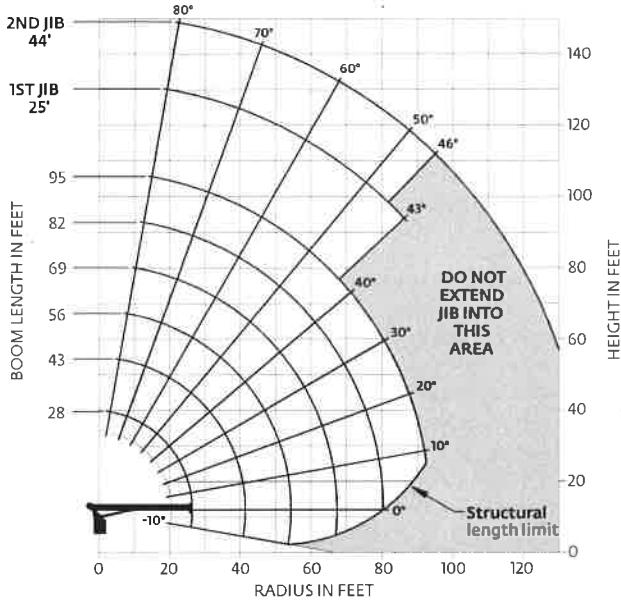
THIS CHART IS ONLY A GUIDE AND SHOULD NOT BE USED TO OPERATE THE CRANE.

The individual crane's load chart, operating instructions and other instructional plates must be read and understood prior to operating the crane.

Capacities

Series 1195: 95 ft boom with 44 ft jib

Other Series 1100 Load Rating Charts are available. National Crane will send you a chart on request – or you may secure needed load rating information through your nearest National Crane dealer.



CAUTION:

- Do not operate crane booms, jib extensions, any accessories or loads within 3 m (10 ft) of live power lines or other conductors of electricity.
- Jib and boom capacities shown are maximum for each section.
- Do not exceed capacities at reduced radii.
- Load ratings shown on the load rating charts are maximum allowable loads with the outriggers properly extended on a firm, level surface and the crane leveled and mounted on a factory recommended truck.
- Always level the crane with the level indicator located on the crane.
- The operator must reduce load to allow for factors such as wind, ground conditions, operating speeds and their effects on freely suspended loads.
- Overloading this crane may cause structural collapse or instability.
- Weights on any accessories attached to the boom or loadline must be deducted from the load chart capacities.
- Do not exceed jib capabilities at any reduced boom lengths.
- Do not deadhead lineblock against boom tip when extending boom or winching up.
- Keep at least three wraps of loadline on drum at all times.
- Use only specified cable with this machine.

NOTE:

1. Operate with jib by radius when main boom is fully extended. If necessary increase boom angle to maintain loaded radius.
2. Operate with jib by boom angle when main boom is not fully extended. Do not exceed rated jib capacities at any reduced boom lengths.

Load chart

LOAD RADIUS (ft)	LOADED BOOM ANGLE	28 ft BOOM (lb)	LOADED BOOM ANGLE	43 ft BOOM (lb)	LOADED BOOM ANGLE	56 ft BOOM (lb)	LOADED BOOM ANGLE	69 ft BOOM (lb)	LOADED BOOM ANGLE	82 ft BOOM (lb)	LOADED BOOM ANGLE	95 ft BOOM (lb)
5	78.5	53,900										
8	71.5	39,700										
10	67	33,100	76	30,100								
12	62.5	28,300	73.5	25,800	78	23,700						
14	57.5	24,800	70.5	22,600	76	20,700	79	18,700				
16	52	21,800	67.5	20,000	73.5	18,400	77.5	16,700	80	14,300		
20	40	17,100	61.5	16,300	69	15,000	74	13,600	77	12,300	79	10,000
25	17.5	11,200	53	13,100	63.5	12,100	69.5	11,100	73.5	10,300	76	8800
30			43.5	10,600	57.5	10,100	65	9300	69.5	8700	73	7800
35			32	8400	50.5	8500	60	7900	66	7300	70	6800
40			15.5	5800	44	7200	55	6800	62	6400	66.5	5900
45					35.5	5800	50	5650	58	5450	63	5100
50					24.5	4600	43.5	4650	53.5	4550	59.5	4400
55							37	3800	48.5	3800	56	3800
60							28.5	3050	43.5	3200	52	3200
65							16.5	2300	37.5	2600	47.5	2650
70									31	2100	43	2150
75									22.5	1700	38	1750
80											32.5	1350
85											26	1050
90											16.5	750
	0	5600	0	2500	0	1150	0	350				
ADD TO CAPACITIES WHEN NO JIB STOWED (lb)		600		400		300		300		200		200

LOAD RADIUS (ft)	LOADED BOOM ANGLE	25 ft JIB (lb)	LOADED BOOM ANGLE	44 ft JIB (lb)
30	77	5200	79.5	3200
35	75	4800	78	3050
40	72.5	4350	76	2850
45	70	3900	74	2650
50	67.5	3500	72	2450
55	65	3050	70	2300
60	62	2550	67	2150
65	59	2100	65	2000
70	56	1750	63	1850
75	52.5	1400	60.5	1600
80	49.5	1100	58	1350
85	46	800	54.5	1150
90	43	600	52	950
95			49	750
100			46	600

*Note: 56,000 lb (28 USc) load requires optional 9/16 in 6x25 IWRC cable. Shaded areas are structurally limited capacities.