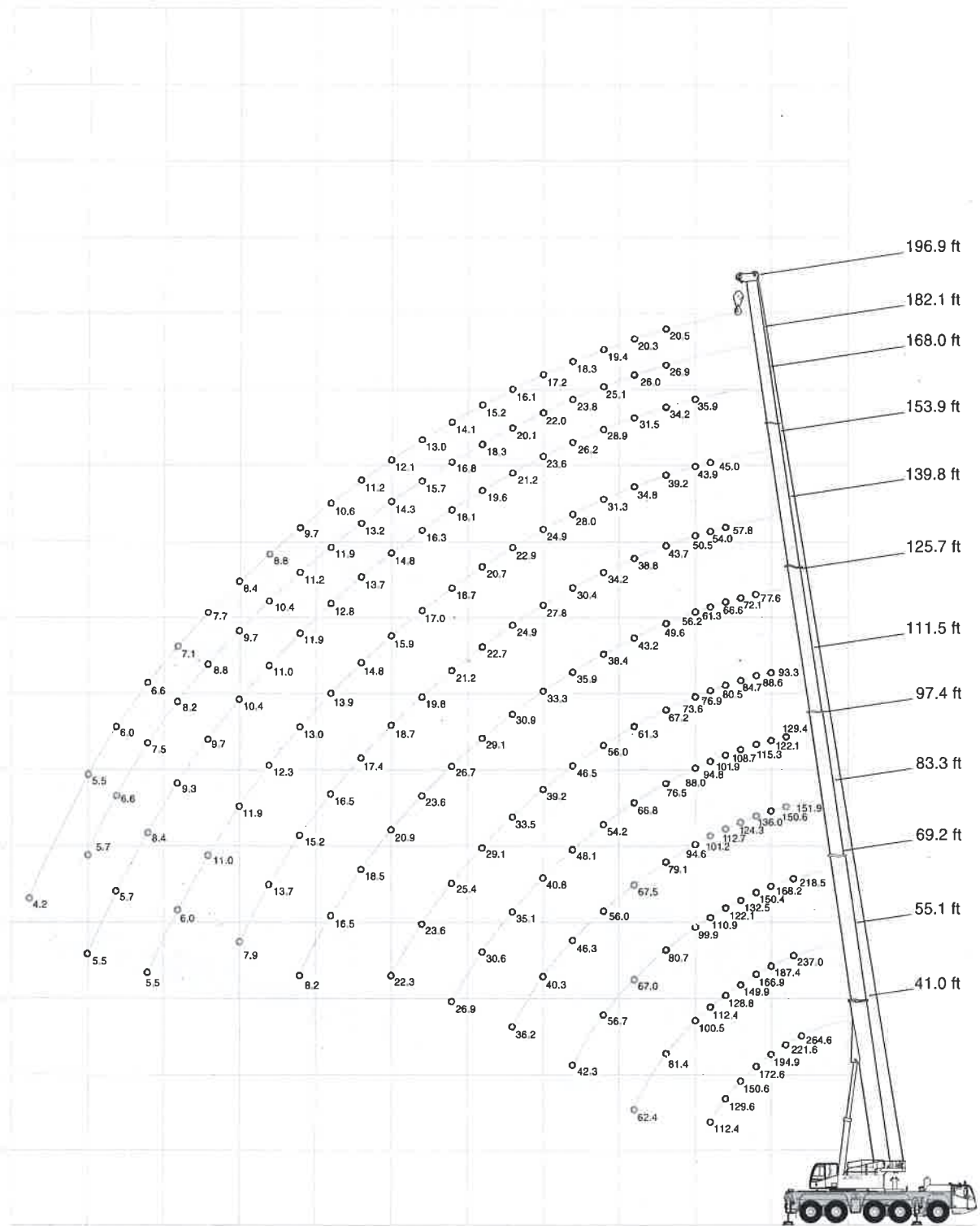


**WORKING RANGES MAIN BOOM**



**ALL TERRAIN CRANE**  
**AC 140**

**LIFTING CAPACITIES MAIN BOOM**

86,000 lb  360° 85 %

Radius	Main boom													Radius
	ft	41.0	55.1	69.2	83.3	97.4	111.5	125.7	139.8	153.9	168.0	182.1	196.9	
ft	1,000 lb													ft
	340.0*	-	-	-	-	-	-	-	-	-	-	-	-	
10	264.6	237.0	218.5	151.9	-	-	-	-	-	-	-	-	-	10
12	238.1	223.8	203.9	145.5	-	-	-	-	-	-	-	-	-	12
13	221.6	213.4	189.6	166.2	129.4	-	-	-	-	-	-	-	-	13
15	207.7	199.5	178.8	158.3	125.7	-	-	-	-	-	-	-	-	15
16	194.9	187.4	168.2	150.6	122.1	93.3	-	-	-	-	-	-	-	16
20	172.6	166.9	150.4	136.0	115.3	88.6	77.6	-	-	-	-	-	-	20
23	150.6	149.9	132.5	124.3	108.7	84.7	72.1	-	-	-	-	-	-	23
26	129.6	128.8	122.1	112.7	101.9	80.5	66.6	57.8	-	-	-	-	-	26
30	112.4	112.4	110.9	101.2	94.8	76.9	61.3	54.0	45.0	-	-	-	-	30
33	-	100.5	99.9	94.6	88.0	73.6	56.2	50.5	43.9	35.9	-	-	-	33
39	-	81.4	80.7	79.1	76.5	67.2	49.6	43.7	39.2	34.2	26.9	20.5	-	39
46	-	62.4	67.0	67.5	66.8	61.3	43.2	38.8	34.8	31.5	26.0	20.3	-	46
53	-	-	56.7	56.0	54.2	56.0	38.4	34.2	31.3	28.9	25.1	19.4	-	53
59	-	-	42.3	46.3	48.1	46.5	35.9	30.4	28.0	26.2	23.8	18.3	-	59
66	-	-	-	40.3	40.8	39.2	33.3	27.8	24.9	23.6	22.0	17.2	-	66
72	-	-	-	36.2	35.1	33.5	30.9	24.9	22.9	21.2	20.1	16.1	-	72
79	-	-	-	-	30.6	29.1	29.1	22.7	20.7	19.6	18.3	15.2	-	79
85	-	-	-	-	26.9	25.4	26.7	21.2	18.7	18.1	16.8	14.1	-	85
92	-	-	-	-	-	23.6	23.6	19.8	17.0	16.3	15.7	13.0	-	92
98	-	-	-	-	-	22.3	20.9	18.7	15.9	14.8	14.3	12.1	-	98
105	-	-	-	-	-	-	18.5	17.4	14.8	13.7	13.2	11.2	-	105
112	-	-	-	-	-	-	16.5	16.5	13.9	12.8	11.9	10.6	-	112
118	-	-	-	-	-	-	8.2	15.2	13.0	11.9	11.2	9.7	-	118
125	-	-	-	-	-	-	-	13.7	12.3	11.0	10.4	8.8	-	125
131	-	-	-	-	-	-	-	7.9	11.9	10.4	9.7	8.4	-	131
138	-	-	-	-	-	-	-	-	11.0	9.7	8.8	7.7	-	138
144	-	-	-	-	-	-	-	-	6.0	9.3	8.2	7.1	-	144
151	-	-	-	-	-	-	-	-	5.5	8.4	7.5	6.6	-	151
158	-	-	-	-	-	-	-	-	-	5.7	6.6	6.0	-	158
164	-	-	-	-	-	-	-	-	-	5.5	5.7	5.5	-	164
177	-	-	-	-	-	-	-	-	-	-	-	4.2	-	177
190	-	-	-	-	-	-	-	-	-	-	-	-	-	190

**Remarks**

\* with special attachment, on request



## LIFTING CAPACITIES MAIN BOOM

47,200 lb

360°

85 %

		Main boom												
Radius	ft	41.0	55.1	69.2	83.3	97.4	111.5	125.7	139.8	153.9	168.0	182.1	196.9	Radius
ft		1,000 lb												ft
10		264.6	237.0	218.5	151.9	-	-	-	-	-	-	-	-	10
12		238.1	223.8	203.9	145.5	-	-	-	-	-	-	-	-	12
13		221.6	213.4	189.6	166.2	129.4	-	-	-	-	-	-	-	13
15		207.7	199.5	178.8	158.3	125.7	-	-	-	-	-	-	-	15
16		194.7	187.4	168.2	150.6	122.1	93.3	-	-	-	-	-	-	16
20		160.5	159.8	150.4	136.0	115.3	88.6	77.6	-	-	-	-	-	20
23		134.3	133.6	131.8	124.3	108.7	84.7	72.1	-	-	-	-	-	23
26		115.1	115.7	115.1	112.7	101.9	80.5	66.6	57.8	-	-	-	-	26
30		99.6	100.8	100.1	95.7	93.0	76.9	61.3	54.0	45.0	-	-	-	30
33		-	83.3	82.5	84.9	80.2	73.6	56.2	50.5	43.9	35.9	-	-	33
39		-	61.7	62.2	61.3	63.3	61.3	49.6	43.7	39.2	34.2	26.9	20.5	39
46		-	42.1	48.9	49.8	48.7	47.0	43.2	38.8	34.8	31.5	26.0	20.3	46
53		-	-	40.1	39.9	38.8	37.3	38.4	34.2	31.3	28.9	25.1	19.4	53
59		-	-	26.0	32.8	31.7	33.3	31.7	29.3	28.0	26.2	23.8	18.3	59
66		-	-	-	27.6	28.0	27.8	26.5	26.7	24.0	23.6	22.0	17.2	66
72		-	-	-	23.6	24.7	23.6	22.7	22.9	21.4	20.5	20.1	16.1	72
79		-	-	-	-	21.4	20.3	20.7	19.6	19.4	18.5	18.3	15.2	79
85		-	-	-	-	18.7	17.6	18.1	16.8	16.5	16.3	15.4	14.1	85
92		-	-	-	-	-	16.3	15.7	15.7	14.8	13.9	13.0	12.8	92
98		-	-	-	-	-	14.8	13.7	13.4	12.8	11.9	10.8	10.8	98
105		-	-	-	-	-	-	12.1	11.7	11.0	10.1	9.0	9.0	105
112		-	-	-	-	-	-	11.2	10.4	9.5	8.6	7.7	7.5	112
118		-	-	-	-	-	-	8.2	9.0	8.2	7.3	6.4	6.2	118
125		-	-	-	-	-	-	-	7.9	7.3	6.2	5.1	5.1	125
131		-	-	-	-	-	-	-	7.1	6.2	5.1	4.2	4.0	131
138		-	-	-	-	-	-	-	-	5.3	4.2	3.3	3.1	138
144		-	-	-	-	-	-	-	-	4.4	3.3	2.4	2.2	144
151		-	-	-	-	-	-	-	-	3.7	2.6	1.5	1.5	151
158		-	-	-	-	-	-	-	-	-	2.0	-	-	158

13,900 lb

360°

85 %

		Main boom												
Radius	ft	41.0	55.1	69.2	83.3	97.4	111.5	125.7	139.8	153.9	168.0	182.1	196.9	Radius
ft		1,000 lb												ft
10		264.6	237.0	218.5	151.9	-	-	-	-	-	-	-	-	10
12		238.1	223.8	203.9	145.5	-	-	-	-	-	-	-	-	12
13		221.6	213.4	189.6	166.2	129.4	-	-	-	-	-	-	-	13
15		201.5	199.5	178.8	158.3	125.7	-	-	-	-	-	-	-	15
16		178.1	177.5	168.2	150.6	122.1	93.3	-	-	-	-	-	-	16
20		144.2	142.0	130.3	118.8	108.7	88.6	77.6	-	-	-	-	-	20
23		110.9	110.7	102.5	96.1	87.7	83.3	72.1	-	-	-	-	-	23
26		81.6	85.8	84.9	79.6	76.1	68.3	63.3	57.8	-	-	-	-	26
30		63.5	69.0	68.6	69.2	63.5	57.1	53.6	50.5	45.0	-	-	-	30
33		-	56.0	57.8	57.5	54.0	50.5	48.7	43.9	40.8	35.9	-	-	33
39		-	39.7	41.0	41.0	41.9	41.0	37.5	36.4	34.0	30.4	26.9	20.5	39
46		-	23.1	31.1	32.8	32.4	31.3	32.0	29.8	28.7	26.2	24.3	20.3	46
53		-	-	25.4	26.0	25.6	26.0	25.1	24.9	23.1	21.2	19.2	18.5	53
59		-	-	17.2	20.9	21.4	21.2	20.9	20.1	19.0	17.0	15.4	14.6	59
66		-	-	-	17.6	17.6	17.6	17.2	16.8	15.4	13.7	12.1	11.2	66
72		-	-	-	14.8	14.8	14.8	14.3	13.7	12.6	11.0	9.5	8.6	72
79		-	-	-	-	12.6	12.1	11.7	11.0	10.1	8.8	7.3	6.6	79
85		-	-	-	-	10.6	10.1	9.7	9.0	8.2	6.8	5.5	4.9	85
92		-	-	-	-	-	8.6	8.2	7.5	6.6	5.3	4.0	3.5	92
98		-	-	-	-	-	7.1	6.6	6.0	5.1	4.0	2.9	2.2	98
105		-	-	-	-	-	-	5.5	4.6	4.0	2.9	1.8	-	105
112		-	-	-	-	-	-	4.4	3.7	2.9	1.8	-	-	112
118		-	-	-	-	-	-	3.5	2.9	2.0	-	-	-	118
125		-	-	-	-	-	-	-	2.0	-	-	-	-	125
131		-	-	-	-	-	-	-	-	-	-	-	-	131

ALL TERRAIN CRANE  
**AC 140**

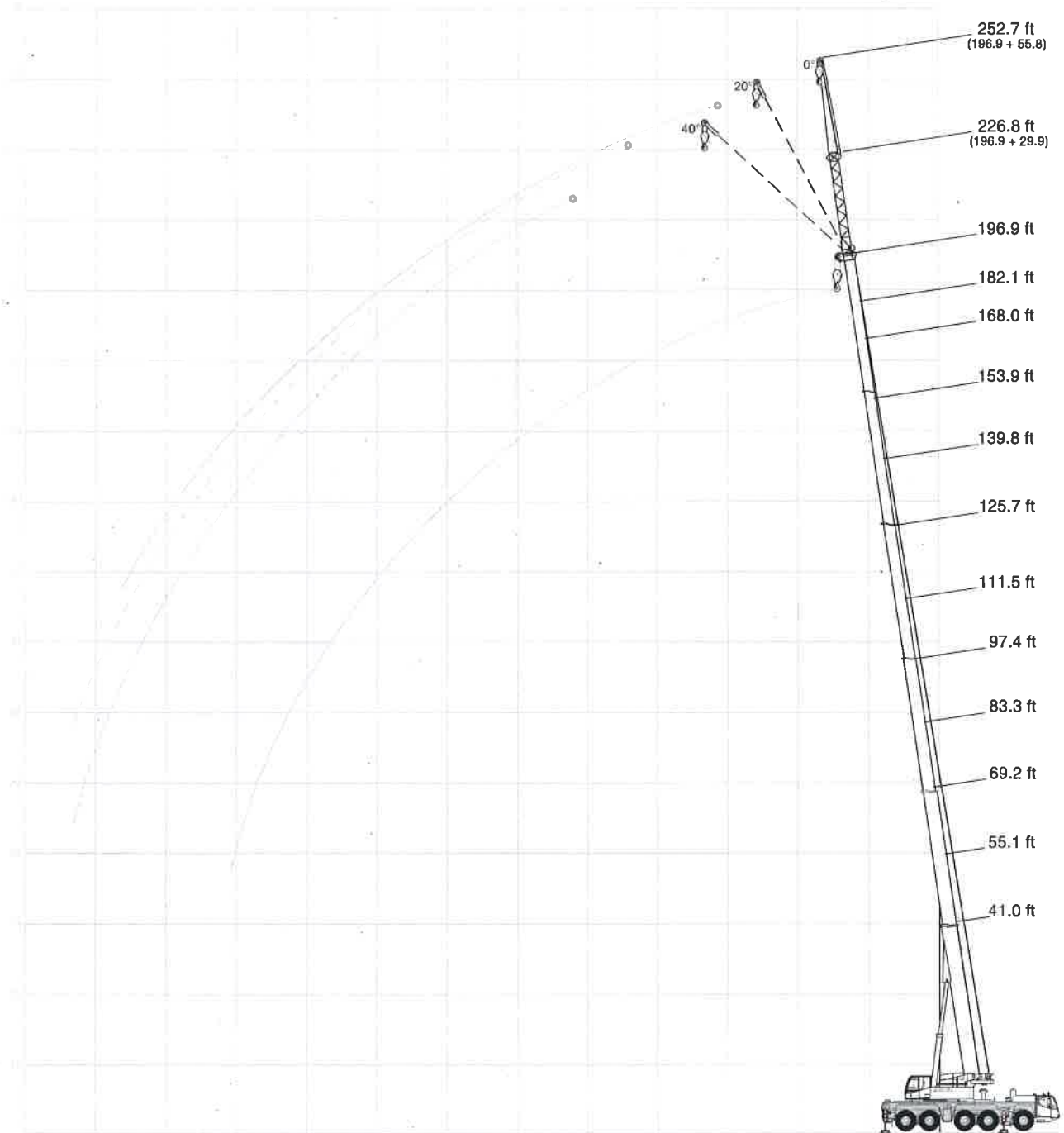
**LIFTING CAPACITIES MAIN BOOM**

0 lb  360° 85 %

		Main boom												
Radius	ft	41.0	55.1	69.2	83.3	97.4	111.5	125.7	139.8	153.9	168.0	182.1	196.9	Radius
	ft	1,000 lb												ft
10		264.6	237.0	218.5	151.9	-	-	-	-	-	-	-	-	10
12		238.1	223.8	203.9	145.5	-	-	-	-	-	-	-	-	12
13		219.6	213.4	188.5	161.4	129.4	-	-	-	-	-	-	-	13
15		192.9	189.6	161.6	133.8	117.1	-	-	-	-	-	-	-	15
16		170.4	153.4	132.1	118.4	100.3	92.6	-	-	-	-	-	-	16
20		117.1	110.2	100.5	92.4	82.9	73.6	64.6	-	-	-	-	-	20
23		77.6	84.0	79.4	74.3	66.1	61.1	55.6	-	-	-	-	-	23
26		56.4	61.9	63.7	60.6	54.7	52.7	48.3	44.5	-	-	-	-	26
30		43.4	48.3	49.8	49.6	49.6	44.8	42.8	40.1	36.8	-	-	-	30
33		-	38.8	40.3	42.3	41.9	39.9	37.0	34.8	32.0	28.7	-	-	33
39		-	27.1	29.3	30.0	30.6	30.2	29.5	26.9	24.5	21.8	19.6	18.3	39
46		-	13.9	22.0	22.9	22.9	22.9	22.7	21.2	19.2	16.8	15.0	13.9	46
53		-	-	17.4	17.9	18.3	17.9	17.6	16.8	15.2	13.0	11.2	10.6	53
59		-	-	13.7	14.1	14.6	14.3	13.9	13.4	12.1	10.1	8.6	7.9	59
66		-	-	-	11.5	11.9	11.5	11.2	10.6	9.5	7.7	6.2	5.7	66
72		-	-	-	9.3	9.7	9.3	9.0	8.6	7.5	5.7	4.4	3.7	72
79		-	-	-	-	7.9	7.7	7.3	6.8	5.7	4.2	2.9	2.2	79
85		-	-	-	-	6.6	6.2	6.0	5.5	4.4	2.9	-	-	85
92		-	-	-	-	-	5.1	4.6	4.0	3.1	1.5	-	-	92
98		-	-	-	-	-	4.0	3.5	2.9	2.0	-	-	-	98
105		-	-	-	-	-	-	2.6	1.8	-	-	-	-	105
112		-	-	-	-	-	-	1.8	-	-	-	-	-	112
118		-	-	-	-	-	-	-	-	-	-	-	-	118



**WORKING RANGES MAIN BOOM EXTENSION**



ALL TERRAIN CRANE  
**AC 140**

**LIFTING CAPACITIES MAIN BOOM EXTENSION**

86,000 lb

360°

85 %

41.0 ft Main boom							
Radius	Extension						
	29.9 ft			55.8 ft			
	0°	20°	40°	0°	20°	40°	
ft	1,000 lb						
10	35.7	-	-	23.4	-	-	
12	35.7	-	-	22.5	-	-	
13	35.7	-	-	21.6	-	-	
15	34.8	-	-	20.7	-	-	
16	34.0	25.4	-	20.1	-	-	
20	31.7	23.8	-	18.5	-	-	
23	29.5	22.5	-	17.2	-	-	
26	27.8	21.4	17.2	16.1	-	-	
30	25.8	20.5	16.5	15.0	12.1	-	
33	24.0	19.6	16.1	14.1	11.5	-	
39	21.4	18.1	15.0	12.8	10.6	-	
46	19.2	16.8	14.1	11.5	9.7	8.4	
53	17.6	15.9	13.9	10.4	8.8	7.7	
59	16.3	15.9	-	9.5	8.4	7.5	
66	-	-	-	8.6	7.7	7.1	
72	-	-	-	7.9	7.3	6.8	
79	-	-	-	7.5	7.1	6.8	
85	-	-	-	-	6.8	-	
92	-	-	-	-	-	-	
98	-	-	-	-	-	-	
105	-	-	-	-	-	-	
112	-	-	-	-	-	-	
118	-	-	-	-	-	-	

139.8 ft Main boom							
Radius	Extension						
	29.9 ft			55.8 ft			
	0°	20°	40°	0°	20°	40°	
ft	1,000 lb						
33	29.5	-	-	15.7	-	-	
39	27.8	-	-	14.8	-	-	
46	26.2	19.8	-	13.9	-	-	
53	24.7	19.0	15.4	13.0	10.1	-	
59	23.4	18.3	15.0	12.3	9.5	-	
66	22.3	17.6	14.6	11.7	9.3	-	
72	20.9	17.0	14.3	11.2	8.8	7.3	
79	19.4	16.3	14.1	10.6	8.4	7.1	
85	17.9	15.7	13.9	10.1	8.2	6.8	
92	16.3	15.0	13.7	9.7	7.7	6.8	
98	14.8	14.3	13.4	9.3	7.5	6.6	
105	13.7	13.4	13.2	8.8	7.3	6.4	
112	12.6	12.8	12.8	8.4	7.1	6.4	
118	11.7	11.9	11.9	7.9	6.8	6.4	
125	10.8	11.0	11.0	7.7	6.6	6.2	
131	9.9	10.1	10.1	7.5	6.6	6.2	
138	9.5	9.3	9.5	7.3	6.4	6.2	
144	9.0	9.0	9.3	6.8	6.4	6.2	
151	8.6	8.6	4.6	6.6	6.2	6.2	
158	4.4	4.4	-	6.4	6.2	6.2	
164	-	-	-	6.2	6.0	6.2	
177	-	-	-	6.0	5.7	3.1	
190	-	-	-	-	-	-	

168.0 ft Main boom							
Radius	Extension						
	29.9 ft			55.8 ft			
	0°	20°	40°	0°	20°	40°	
ft	1,000 lb						
39	22.5	-	-	-	-	-	
46	21.8	-	-	12.3	-	-	
53	20.9	17.6	-	11.9	-	-	
59	20.3	17.0	14.3	11.2	-	-	
66	19.2	16.5	14.1	10.8	8.8	-	
72	17.9	15.9	13.9	10.4	8.4	-	
79	16.5	15.2	13.7	9.9	8.2	6.8	
85	15.2	14.6	13.4	9.7	7.7	6.8	
92	13.9	13.9	13.2	9.3	7.5	6.6	
98	13.0	13.0	13.0	8.8	7.3	6.4	
105	11.9	12.1	12.3	8.6	7.1	6.4	
112	11.0	11.2	11.5	8.2	6.8	6.2	
118	9.9	10.4	10.6	7.9	6.8	6.2	
125	9.0	9.5	9.7	7.7	6.6	6.0	
131	8.6	8.6	8.8	7.5	6.4	6.0	
138	7.9	7.9	8.2	7.1	6.4	6.0	
144	7.5	7.5	7.5	6.8	6.2	6.0	
151	6.8	7.1	7.1	6.4	6.0	6.0	
158	6.4	6.4	6.6	6.0	5.7	5.7	
164	6.0	6.2	6.2	5.5	5.5	5.5	
177	4.4	4.6	3.3	4.6	4.9	4.9	
190	2.6	2.6	-	3.7	4.2	4.2	
203	-	-	-	2.6	2.9	2.0	

196.9 ft Main boom							
Radius	Extension						
	29.9 ft			55.8 ft			
	0°	20°	40°	0°	20°	40°	
ft	1,000 lb						
46	13.2	-	-	-	-	-	
53	13.2	-	-	8.6	-	-	
59	13.0	12.6	-	8.6	-	-	
66	12.3	12.1	11.9	8.4	-	-	
72	11.9	11.7	11.5	8.2	7.7	-	
79	11.5	11.2	11.0	7.9	7.5	-	
85	10.8	10.8	10.6	7.7	7.3	6.4	
92	10.1	10.1	10.1	7.5	7.1	6.2	
98	9.7	9.7	9.7	7.3	6.8	6.2	
105	9.0	9.3	9.3	7.1	6.6	6.0	
112	8.4	8.6	8.8	6.8	6.4	6.0	
118	7.9	8.2	8.4	6.6	6.2	5.7	
125	7.3	7.5	7.7	6.2	6.0	5.7	
131	6.8	7.1	7.3	5.7	5.7	5.5	
138	6.2	6.4	6.6	5.3	5.5	5.5	
144	5.5	6.0	6.0	5.1	5.1	5.3	
151	5.1	5.3	5.5	4.6	4.9	5.1	
158	4.9	4.9	5.1	4.2	4.4	4.6	
164	4.4	4.6	4.6	3.7	4.2	4.4	
177	3.3	3.7	3.7	3.3	3.5	3.7	
190	2.0	2.2	2.4	2.4	2.9	3.1	
203	-	-	-	-	2.0	2.2	
216	-	-	-	-	-	-	

### LIFTING CAPACITIES MAIN BOOM EXTENSION

13,900 lb

360°

85 %

41.0 ft Main boom							
Radius ft	Extension						1,000 lb
	29.9 ft			55.8 ft			
	0°	20°	40°	0°	20°	40°	
10	35.7	-	-	23.4	-	-	
12	35.7	-	-	22.5	-	-	
13	35.7	-	-	21.6	-	-	
15	34.8	-	-	20.7	-	-	
16	34.0	25.4	-	20.1	-	-	
20	31.7	23.8	-	18.5	-	-	
23	29.5	22.5	-	17.2	-	-	
26	27.8	21.4	17.2	16.1	-	-	
30	25.8	20.5	16.5	15.0	12.1	-	
33	24.0	19.6	16.1	14.1	11.5	-	
39	21.4	18.1	15.0	12.8	10.6	-	
46	19.2	16.8	14.1	11.5	9.7	8.4	
53	17.6	15.9	13.9	10.4	8.8	7.7	
59	16.3	15.9	-	9.5	8.4	7.5	
66	-	-	-	8.6	7.7	7.1	
72	-	-	-	7.9	7.3	6.8	
79	-	-	-	7.5	7.1	6.8	
85	-	-	-	-	6.8	-	
92	-	-	-	-	-	-	


139.8 ft Main boom							
Radius ft	Extension						1,000 lb
	29.9 ft			55.8 ft			
	0°	20°	40°	0°	20°	40°	
33	29.5	-	-	15.7	-	-	
39	27.8	-	-	14.8	-	-	
46	24.9	19.8	-	13.9	-	-	
53	21.8	19.0	15.4	13.0	10.1	-	
59	18.3	18.1	15.0	12.3	9.5	-	
66	16.1	16.5	14.6	11.7	9.3	-	
72	13.2	14.8	14.3	10.8	8.8	7.3	
79	10.8	12.1	13.2	9.9	8.4	7.1	
85	8.8	9.9	10.8	9.0	8.2	6.8	
92	7.1	8.2	8.8	7.5	7.7	6.8	
98	5.5	6.4	7.1	6.2	7.3	6.6	
105	4.2	5.1	5.7	5.1	6.6	6.4	
112	3.3	4.0	4.4	4.0	5.3	6.4	
118	2.2	2.9	3.3	2.9	4.2	5.3	
125	-	2.0	2.4	2.2	3.3	4.2	
131	-	-	-	-	2.4	3.3	
138	-	-	-	-	1.5	2.4	
144	-	-	-	-	-	-	
151	-	-	-	-	-	-	

168.0 ft Main boom							
Radius ft	Extension						1,000 lb
	29.9 ft			55.8 ft			
	0°	20°	40°	0°	20°	40°	
39	22.5	-	-	-	-	-	
46	21.8	-	-	12.3	-	-	
53	17.6	17.6	-	11.9	-	-	
59	15.7	16.3	14.3	11.2	-	-	
66	12.6	14.6	14.1	10.8	8.8	-	
72	9.9	11.7	13.2	9.7	8.4	-	
79	7.7	9.3	10.6	7.5	8.2	6.8	
85	5.7	7.3	8.4	6.0	7.7	6.8	
92	4.4	5.5	6.6	4.4	6.8	6.6	
98	3.1	4.2	5.1	3.1	5.3	6.4	
105	2.0	2.9	3.7	2.0	4.0	5.7	
112	-	2.0	2.6	-	2.9	4.4	
118	-	-	1.5	-	2.0	3.3	
125	-	-	-	-	-	2.4	
131	-	-	-	-	-	-	

196.9 ft Main boom							
Radius ft	Extension						1,000 lb
	29.9 ft			55.8 ft			
	0°	20°	40°	0°	20°	40°	
46	13.2	-	-	-	-	-	
53	13.2	-	-	8.6	-	-	
59	13.0	12.6	-	8.6	-	-	
66	9.9	12.1	11.9	8.4	-	-	
72	7.3	9.3	11.0	7.1	7.7	-	
79	5.3	7.1	8.6	5.1	7.5	-	
85	3.5	5.1	6.4	3.3	6.2	6.4	
92	2.2	3.5	4.9	2.0	4.6	6.2	
98	-	2.2	3.3	-	3.3	5.5	
105	-	-	2.0	-	2.0	4.0	
112	-	-	-	-	-	2.9	
118	-	-	-	-	-	1.8	
125	-	-	-	-	-	-	
131	-	-	-	-	-	-	
138	-	-	-	-	-	-	

**ALL TERRAIN CRANE**  
**AC 140**

**LIFTING CAPACITIES MAIN BOOM EXTENSION**

86,000 lb  360° 85 %

41.0 ft Main boom		Extension					
Radius	82.0 ft			108.3 ft			
	0°	20°	40°	0°	20°	40°	
ft	1,000 lb						
16	19.8	-	-	-	-	-	
20	18.7	-	-	-	-	-	
23	17.6	-	-	16.3	-	-	
26	16.8	-	-	15.2	-	-	
30	15.9	-	-	14.3	-	-	
33	15.2	-	-	13.4	-	-	
39	13.9	10.8	-	11.7	-	-	
46	12.6	10.1	-	10.6	9.7	-	
53	11.5	9.5	7.9	9.5	8.8	-	
59	10.6	8.8	7.7	8.4	7.9	7.7	
66	9.7	8.4	7.5	7.7	7.3	7.1	
72	8.8	7.9	7.1	7.1	6.6	6.4	
79	8.2	7.5	7.1	6.2	6.2	6.0	
85	7.7	7.3	6.8	5.7	5.5	5.5	
92	7.1	6.8	6.6	5.3	5.1	5.1	
98	6.6	6.4	6.4	4.9	4.6	4.9	
105	6.2	6.2	6.4	4.4	4.4	4.4	
112	-	-	-	4.0	4.2	4.2	
118	-	-	-	3.7	3.7	4.0	
125	-	-	-	3.5	3.5	3.7	
131	-	-	-	3.3	3.3	-	
138	-	-	-	-	-	-	
144	-	-	-	-	-	-	
151	-	-	-	-	-	-	
158	-	-	-	-	-	-	

139.8 ft Main boom		Extension					
Radius	82.0 ft			108.3 ft			
	0°	20°	40°	0°	20°	40°	
ft	1,000 lb						
46	12.6	-	-	-	-	-	
53	12.1	-	-	9.5	-	-	
59	11.5	-	-	9.0	-	-	
66	11.0	8.8	-	8.4	-	-	
72	10.6	8.6	-	7.9	7.1	-	
79	10.1	8.2	7.1	7.5	6.8	-	
85	9.7	7.9	6.8	7.1	6.4	6.0	
92	9.3	7.7	6.6	6.6	6.2	5.7	
98	8.8	7.5	6.6	6.4	5.7	5.5	
105	8.6	7.3	6.4	6.0	5.5	5.1	
112	8.2	7.1	6.4	5.5	5.3	5.1	
118	7.9	6.8	6.2	5.3	4.9	4.9	
125	7.5	6.6	6.2	5.1	4.6	4.6	
131	7.3	6.6	6.2	4.9	4.4	4.4	
138	6.8	6.4	6.2	4.6	4.2	4.2	
144	6.6	6.2	6.0	4.4	4.2	4.0	
151	6.2	6.0	6.0	4.2	4.0	4.0	
158	5.7	5.7	5.7	4.0	3.7	3.7	
164	5.5	5.5	5.5	3.7	3.5	3.5	
177	4.6	4.6	4.9	3.5	3.3	3.3	
190	3.7	3.7	4.0	2.9	3.1	3.1	
203	3.3	3.3	-	2.2	2.6	2.9	
217	-	-	-	1.8	1.8	2.0	
230	-	-	-	1.5	1.5	-	
243	-	-	-	-	-	-	

168.0 ft Main boom		Extension					
Radius	82.0 ft			108.3 ft			
	0°	20°	40°	0°	20°	40°	
ft	1,000 lb						
53	9.7	-	-	-	-	-	
59	9.7	-	-	6.4	-	-	
66	9.5	-	-	6.4	-	-	
72	9.3	7.9	-	6.4	-	-	
79	9.0	7.7	-	6.2	-	-	
85	8.6	7.5	6.4	6.0	5.7	-	
92	8.4	7.3	6.4	6.0	5.5	-	
98	8.2	7.1	6.2	5.7	5.3	5.1	
105	7.9	6.8	6.2	5.5	5.1	4.9	
112	7.7	6.6	6.2	5.3	4.9	4.6	
118	7.3	6.6	6.0	5.1	4.6	4.4	
125	6.8	6.4	6.0	4.6	4.4	4.2	
131	6.4	6.2	6.0	4.4	4.2	4.2	
138	6.0	6.0	5.7	4.2	4.0	4.0	
144	5.5	5.5	5.5	4.0	4.0	4.0	
151	5.1	5.3	5.3	3.7	3.7	3.7	
158	4.6	4.9	5.1	3.5	3.5	3.5	
164	4.4	4.6	4.6	3.3	3.3	3.3	
177	3.5	4.0	4.0	2.9	2.9	3.1	
190	3.1	3.1	3.3	2.2	2.6	2.6	
203	2.2	2.6	2.6	1.5	2.0	2.2	
217	-	1.8	1.8	-	-	-	
230	-	-	-	-	-	-	

196.9 ft Main boom		Extension					
Radius	82.0 ft			108.3 ft			
	0°	20°	40°	0°	20°	40°	
ft	1,000 lb						
59	5.3	-	-	-	-	-	
66	5.3	-	-	2.9	-	-	
72	5.3	-	-	2.9	-	-	
79	5.1	-	-	2.9	-	-	
85	5.1	4.9	-	2.9	2.6	-	
92	4.9	4.9	-	2.6	2.6	-	
98	4.9	4.6	4.6	2.6	2.6	-	
105	4.6	4.4	4.4	2.6	2.6	2.6	
112	4.4	4.2	4.2	2.4	2.4	2.6	
118	4.2	4.0	4.0	2.2	2.4	2.4	
125	4.0	4.0	4.0	2.2	2.2	2.4	
131	3.7	3.7	3.7	2.0	2.0	2.2	
138	3.5	3.5	3.5	2.0	2.0	2.0	
144	3.3	3.3	3.3	1.8	1.8	2.0	
151	3.1	3.1	3.3	1.5	1.8	1.8	
158	2.9	2.9	3.1	-	1.5	1.8	
164	2.6	2.6	2.9	-	-	1.5	
177	2.0	2.2	2.4	-	-	-	
190	-	1.8	2.0	-	-	-	
203	-	-	-	-	-	-	
217	-	-	-	-	-	-	
230	-	-	-	-	-	-	
243	-	-	-	-	-	-	



**WORKING RANGES MAIN BOOM EXTENSION**

