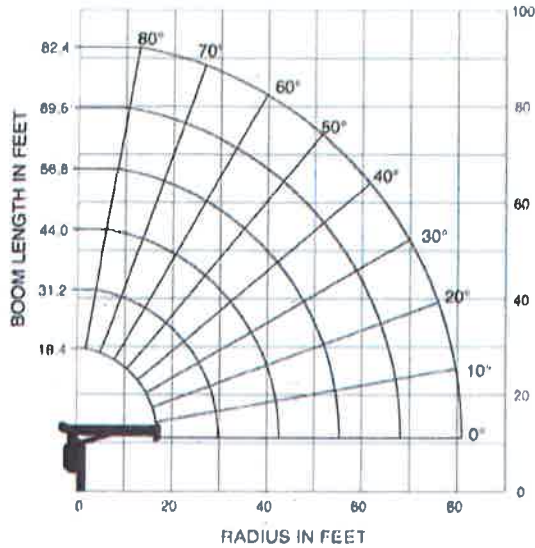


TM-1882 (18 ton) crane capacity

WORKING RANGE



The above lifting heights and boom angles are based on a straight (unladen) boom, and allowance should be made for boom deflection obtained under laden condition.

NOTE:

- Rated lifting capacities on this chart show maximum allowable loads with outriggers properly extended on a firm surface and the crane leveled and mounted on a factory recommended truck. The rated lifting capacities in shaded areas are based on crane strength and others, on its stability (not to exceed 85% of tipping).
- The weight of handling devices such as hook block, slings, etc., must be considered part of the load and must be deducted from the rated lifting capacities.
- Weights of any accessories attached to the boom or loadline must be deducted from the rated lifting capacities.
- The operator must reduce loads to allow for such factors as wind, ground conditions, operating speed and the effects of freely suspended loads such as boom deflection.
- For full capacity 360° around the truck, the chassis requires the front stabilizer (ex. rear mounted) and additional counterweight in the underside of the bed.
- For boom lengths or radius not shown, use the rated lifting capacity of next longer boom lengths or radius.
- For boom lengths longer than 31.2 ft., extend outriggers to max. or mid.
- For boom lengths longer than 56.8 ft., extend outriggers to max.
- 56.8 ft. boom means 1st mark on 4th boom section side plate is half visible.
- 69.6 ft. boom means 2nd mark on 4th boom section side plate is half visible.
- Winch wire rope: diameter x length 9/16" x 279', breaking strength 30,100 lbs.
- Keep at least 3 wraps of loadline on winch drum.
- Maximum load for number of part lines is as shown below.
- Part of lines are:

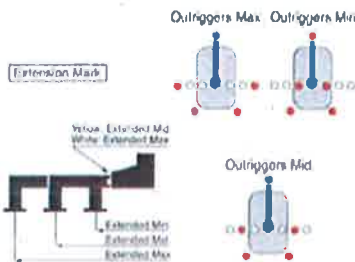


RATED LIFTING CAPACITY (IN POUNDS)

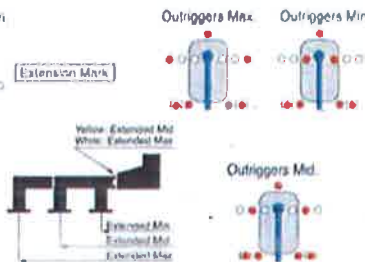
Load radius (ft.)	18.4 ft. Boom			31.2 ft. Boom			44 ft. Boom		56.8 ft. Boom		69.6 ft. Boom		82.4 ft. Boom		Load radius (ft.)					
	Loaded Boom Angle	Outriggers Extended		Loaded Boom Angle	Outriggers Extended		Loaded Boom Angle	Outriggers Extended		Loaded Boom Angle	Outriggers Extended		Loaded Boom Angle	Outriggers Extended						
		Max.	Mid.		Min.	Max.		Mid.	Min.		Max.	Mid.		Max.		Mid.	Max.	Mid.		
5	75°	38,000	30,000	22,000	76°	17,480	17,450	13,200								5				
8	64°	23,000	23,000	15,200	69°	15,800	15,800	8,360								8				
10	57°	19,350	19,350	10,100	68°	17,450	17,450	8,750	79°	17,450	17,450					10				
12	48°	16,550	16,550	7,400	64°	13,650	13,650	4,800	76°	14,650	14,650					12				
14	38°	14,650	14,650	5,650	60°	12,300	11,600	3,760	73°	12,750	12,750	78°	9,050	9,050		14				
16	24°	13,000	12,700	4,600	51°	10,000	7,700	2,350	70°	11,500	11,000	76°	9,050	9,050		16				
20					36°	8,100	4,950	1,300	65°	9,400	7,700	72°	8,450	7,700	77°	9,050	7,300	79°	4,200	20
25									61°	5,650	3,350	66°	6,900	4,950	72°	6,000	76°	4,200	25	
30									54°	4,800	2,400	63°	4,800	2,400	63°	4,300	73°	4,200	30	
35									47°	3,800	1,850	61°	3,800	1,850	58°	3,700	69°	3,800	35	
40									38°	5,050	2,400	54°	4,800	2,400	54°	4,300	65°	3,000	40	
45									23°	3,800	1,850	47°	3,800	1,850	47°	2,780	61°	2,900	45	
50												39°	3,400	1,150	53°	3,150	57°	2,500	50	
55												29°	2,700	900	41°	2,300	52°	2,150	55	
60															33°	2,000	47°	1,900	60	
65															22°	1,600	42°	1,800	65	
70																	35°	1,350	70	
75																	28°	1,200	75	
80																	14°	850	80	
	0°	8,400	8,400	4,050	0°	3,950	3,400	600	0°	1,850	1,300	0°	1,100	700	0°	600	0°	350		
		(16,89ft.)				(29,69ft.)				(42,48ft.)			(65,28ft.)			(68,07ft.)			(81,33ft.)	

Notice: The chart is only for reference and should not be used for operation. Maintain a clearances at least 10 feet between any part of the crane, load line or load and any electrical line carrying up to 50,000 volts. One foot additional clearance is required for every additional 30,000 volts or less.

<TRACTOR MOUNTED>



<CAB BACK MOUNTED>



<REAR MOUNTED>

